

# Auxiliary air for powder delivery pipe in thermal power plant



## Overview

---

In this subsystems of thermal power plant, air preheater is an auxiliary system that increase the temperature of air before it enters the furnace. It is generally placed after the economiser - i. Abstract: The existence of the deviation of the outlet air velocity of the powder feeding pipeline in a power plant affects the depth of the primary air injection and the degree of diffusion of the combustion flame, leading to the skewed combustion flame. It affects the ignition and steady. Pneumatic conveying systems are used to transfer bulk solids materials (powder, granule. Although simple in appearance, many design and operational parameters must be well mastered to implement a successful pneumatic. Mastering a variety of technologies permits Rudis to implement various, technically demanding auxiliary systems of Thermal Power Plants. The. C ompressed air at a power plant finds application in coal handling, operating pneumatic instruments connected with boilers, turbines, generators, precipitators, and ash handling system. India is the world's third-largest producer and consumer of electricity.

## Auxiliary air for powder delivery pipe in thermal power plant

---



### auxiliary

Noun auxiliary (plural auxiliaries) A person or group that acts in an auxiliary manner.

### Auxiliary Piping

Special attention to auxiliary piping requirements can reduce maintenance and repair costs, especially those related to barrels, seals, and packing. This is particularly true if the pumped liquid is very hot,



### Auxiliary Systems of A Thermal Power Plant

This document presents a summary of the auxiliary systems of a thermal power plant. It describes the main components such as the boiler, turbine, and electric generator, as well as the starting, cooling,

### AUXILIARY Definition & Meaning

Auxiliary, which comes from the Latin noun auxiliium, meaning "aid," "assistance," or "reinforcement," is used in a wide range of capacities in English to describe a person or thing that assists another.



[Study on the deviation of outlet air velocity of powder feeding duct](#)



## Pneumatic Conveying Systems Handbook

This page is focusing on powder breakage and pipe wear in pneumatic conveying. Estimation methods of powder breakage levels and find ways to reduce it are



## What does Auxiliary mean?

An auxiliary is something that provides additional help, support or assistance, supplementing the primary or main function or operation. It can be a person, a device, or an organization that assists or



Abstract: The existence of the deviation of the outlet air velocity of the powder feeding pipeline in a power plant affects the depth of the primary air injection and the degree of diffusion of the



## auxiliary

an organization allied with, but subsidiary to, a main body of restricted membership, esp. one composed of members' relatives: The men's club and the ladies' auxiliary were merged into one organization.



## [AUXILIARY , definition in the Cambridge English Dictionary](#)

AUXILIARY meaning: 1. giving help or support, especially to a more important person or thing: 2. a person whose job . Learn more.

## [AUXILIARY definition in American English , Collins English Dictionary](#)

An auxiliary is a person who is employed to assist other people in their work. Auxiliaries are often medical workers or members of the armed forces. Nursing auxiliaries provide basic care, but are not

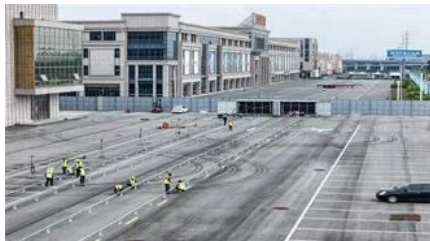


## **AUXILIARY Definition & Meaning , Dictionary**

AUXILIARY definition: additional; supplementary; reserve. See examples of auxiliary used in a sentence.

## **Auxiliary Definition & Meaning , YourDictionary**

Auxiliary definition: Giving assistance or support; helping.



## [auxiliary , meaning of auxiliary in Longman Dictionary of](#)

o Baldwin was an important but fairly silent auxiliary to MacDonald. o The companion ladder, engine box and associated panels are very easy to remove, giving excellent access to the auxiliary.

## **Auxiliary systems in Thermal Power Plants**

Specific requirements for electrical energy generating in Thermal Power Plants necessitate implementation of diversified auxiliary systems, such as transport,





## Auxiliary

The Latin word *auxilium* means "help," and so auxiliary means something that "helps" by providing backup or support. Think of auxiliary verbs (sometimes called helper verbs), that provide support

## Contact Us

---

For catalog requests, pricing, or partnerships, please visit:  
<https://www.peyronies.us>