

Breaker distribution for sale in South-Africa



Overview

Shop ARB's range of robust and efficient distribution boards, ensuring reliable power distribution and safety in your electrical setups. A distribution board (also known as panelboard, breaker panel, or electric panel) is a component within the electricity supply system that divides an electrical power feed into different circuits while providing a protective fuse or circuit breaker for each circuit - all within a common enclosure. The Chint 3kA 1P 50A Circuit Breaker C-Curve is an electrical protection device that is designed to interrupt electrical current flow in the event. Buy online or present your Builders+ virtual card in store for a chance to win a R5,000 Builders voucher every month. Shop online FREE delivery in SA.

Breaker distribution for sale in South-Africa



[Circuit breakers , Electrical circuit breakers , Eaton](#)

Discover how circuit breakers function, the main components of circuit breakers and how they differ from fuses. Get all of the fundamentals of circuit breakers.

Circuit Breakers at Lowes

Square D, Eaton and Siemens are among the most popular Circuit Breaker brands. While those brands are the most popular overall, you will also find a great assortment from GE, Connecticut Electric and



DB Boxes & Circuit Breakers for Sale

We stock a range of DB Boxes & Circuit Breakers from well-known brands offering quality Electrical Supplies for sale. Shop Electrical Supplies from Buco today!

[Circuit Breaker: What it is And How it Works , Electrical4U](#)

A circuit breaker is defined as a switching device that can be operated manually or automatically for controlling and protecting an electrical power system. It consists of two main



DISTRIBUTION BOARDS & CIRCUIT



Circuit breaker

Once a fault is detected, the circuit breaker contacts must open to interrupt the circuit; this is commonly done using mechanically stored energy contained within the breaker, such as a spring or



How Circuit Breakers Work , HowStuffWorks

The basic circuit breaker consists of a simple switch, connected to either a bimetallic strip or an electromagnet. The hot wire in the circuit connects to the two ends of the switch.



BREAKERS For Sale

Looking for distribution board circuit breakers? Brite Lighting & Electrical offers a wide range of distribution board circuit breakers for sale.



Circuit Breakers

Understanding your main circuit breaker panel is key to performing any electrical installation or repair in your home. Circuit breakers - also recognized as tandem breakers or double pole breakers - are



Circuit Breaker Explained , Working Principle

Now, to understand how a circuit breaker works, let's first take a look at a cross-section of the device that shows the basic parts and design of a circuit breaker.

What is a Circuit Breaker and How Does it Work?

What is a Circuit Breaker? A circuit breaker is a safety switch that automatically "opens" (breaks) a circuit when a triggering event occurs, such as an overload, short circuit or ground fault.

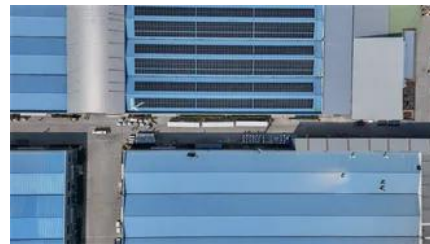


Circuit Breaker Basics , ABB Electrification U.S.

By definition a circuit breaker is an electrical safety device, a switch that automatically interrupts the current of an overloaded electric circuit, ground faults, or short circuits.

[What is a Circuit Breaker , Schneider Electric United States](#)

When the circuit breaker trips, the contacts separate to stop the electricity. The contacts allow the current to flow through the circuit breaker when closed, and are designed to protect against



Contact Us

For catalog requests, pricing, or partnerships, please visit:
<https://www.peyronies.us>