

Data Center Rack 690V Member Price



Overview

A: In the US, a standard full rack (42U, 3-5 kW) runs \$900-\$2,500/month all-in at a Tier 3 facility, depending on market and term length. High-density racks (10-30+ kW) in top-tier markets can exceed \$3,000-\$6,000+/month before bandwidth and cross-connects. Exos® CORVAULT™ 4U106 4U rackmount - featuring up to 2.0-metre-deep racks Maximise value and minimise TCO for scale-out workloads using a scalable, dense compute infrastructure focused on performance. Our DC Series is the Data Center Standard for high-capacity, high-weight load rated, feature rich cabinets. These deployable, seismic and UL-rated cabinets are fully welded, pre-assembled, and come standard with features such as recessed PDU Cavities, and are configurable with or without doors. Average cost per rack in colocation ranges from under \$500/month to well over \$5,000/month, and the gap isn't random. It's a function of market, power density, bandwidth model, contract term, and whether the salesperson on the other end of the phone thinks you're a sophisticated buyer or a. Enconnex designs and manufactures a comprehensive selection of racks, cabinets, enclosures, and accessories. Our flagship data center cabinet, InfiniRack, is nearly endlessly configurable, ensuring you get the perfect solution for your unique environment. Create a free account to see your real prices. Filters! Shop HPE Authorized Partner Rack Servers - compare pricing, check real-time stock, and buy from an authorized dealer with free shipping on orders over \$500. Acceleration-optimized PowerEdge servers were key to securing Dell Technologies' position as a Leader in AI infrastructure solutions during the first quarter of 2024, according to The Forrester Wave™ report.

Data Center Rack 690V Member Price



Data Management Annex (Version 1.4)

Why the Belmont Forum requires Data Management Plans (DMPs) The Belmont Forum supports international transdisciplinary research with the goal of providing knowledge for understanding,

Data storage and security: lifehack your research

Introduce attendees to our open source data platform for big data Mixture of: instruction, demos, hands-on exercises, small group project Focus on quantitative data and statistical



Data and Digital Outputs Management Plan Template

A full Data and Digital Outputs Management Plan for an awarded Belmont Forum project is a living, actively updated document that describes the data management life cycle for the data and other

Data Center Cost Per Rack / KW / MW / SQFT /

Find breakdown of Data center cost per racks unit, sqft and KWH, MWH,



[Geographic Information Policy and](#)



Spatial Data Infrastructures

Several actions related to the data lifecycle, such as data discovery, do require an understanding of the data, technology, and information infrastructures that may result from information science education.

Microsoft Word

Why Data Management Plans (DMPs) are required. The Belmont Forum and BiodivERSA support international transdisciplinary research with the goal of providing knowledge for understanding,



Data Skills Curricula Framework

programming, environmental data, visualisation, management, interdisciplinary data software development, object orientated, data science, data organisation DMPs and repositories, team skills

ARC 2024

A full Data and Digital Outputs Management Plan (DDOMP) for an awarded Belmont Forum project is a living, actively updated document that describes the data management life cycle



DATA CENTER CABINETS & RACKS

Our DC Series is the Data Center Standard for high-capacity, high-weight load rated, feature rich cabinets.

BELMONT FORUM E-INFRASTRUCTURES AND DATA

Understandable the sharing of data international should be and infrastructures thus, requires with preference that facilitate contextual allows researchers-including non-proprietary international

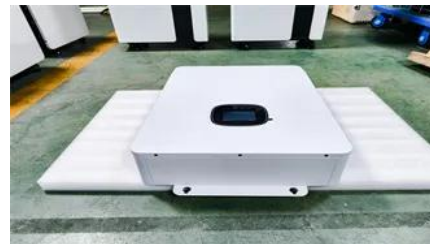


[Belmont Forum Data Accessibility Statement and Policy](#)

Underlying Rationale In 2015, the Belmont Forum adopted the Open Data Policy and Principles . The e-Infrastructures & Data Management Project is designed to support the operationalization of this

Perspectivas INPE: 2005-2009

Big data EO management and analysis 40 years of Earth Observation data of land change accessible for analysis and modelling.



Average Cost Per Rack in a Data Center

If you're shopping for racks that need to support 10 kW, 20 kW, or 30+ kW - GPU servers, dense storage arrays, AI inference clusters - you are not in the same market as the person

Contact Us

For catalog requests, pricing, or partnerships, please visit:
<https://www.peyronies.us>