

# Distributed Energy Storage Cabinet Grid-connected



## Distributed Energy Storage Cabinet Grid-connected

---



### DistributedCOM Error. Solved

What u did by deleting all entries in the registry for GUID {1B562E86-B7AA-4131-BADC-B6F3A001407E} in the eventlog is it not the same as what Vaio 7 did by setting 0 to the dword to

### Cube 225

The Cube 225-Y integrated photovoltaic - energy storage system adopts an integrated multi-functional design. It supports photovoltaic access and seamless



### AC Low Voltage Grid-Connected Cabinet for

Our AC low voltage grid-connected cabinets are meticulously designed and crafted with advanced technologies and high-quality materials.

[Store apps close immediately, Event 10010 with DistributedCOM](#)

Update: Just came back from re-installing and re-registering all Windows Store Apps (even the Store itself I noticed) and still having the same issue. Did a reboot just in case after



[All-in-One Energy Storage Cabinet & BESS Cabinets , Modular](#)

Featuring lithium-ion batteries, integrated thermal management, and smart BMS technology, these cabinets are perfect for grid-

tied, off-grid, and microgrid applications. Explore reliable, and IEC

[PRS-7564 Intelligent Grid-Connected And Off-Grid Switching Cabinet](#)

It takes less than 10ms to switch between grid-connected and off-grid modes, and it has active and passive grid-connected and off-grid switching functions.



**Event ID 10016, DistributedCOM**

Updated to 1803 17134.1 without a problem but one error - Distributed COM event ID 10016. Experienced this event ID many times previously and have fixed by changing permissions in

[Windows 10 Event ID 10010 and 10016 Errors With DistributedCOM](#)

I am having a number of events that seem to be located repeatedly with the source: DistributedCOM Event ID: 10010 and Event ID: 10016 also getting rep



[What is the grid-connected cabinet, how to choose the suitable grid](#)

Our photovoltaic power plants, wind farms or home solar systems may be equipped with off-grid systems when purchasing. Then, when the equipment needs to be connected to the power

**Need Help with DistributedCOM 10010**

In this video, i will guide you on how to fix DistributedCOM Event ID 10016 error in Windows 10 and Windows 11.





[grid connected energy storage cabinet for business.Industrial Energy](#)

We engineer each energy storage cabinet to be safer and more valuable, delivering sustainable power that fuels your enterprise's growth and contributes to mankind's dream of energy freedom.



[Low-Voltage Energy Storage Grid-Tie Cabinet for Commercial](#)

Designed for commercial and industrial applications, it ensures safe, intelligent, and efficient grid connection. This cabinet integrates AC power collection, bidirectional energy metering, grid



**Energy Storage Box PV Grid-Connected Cabinet**

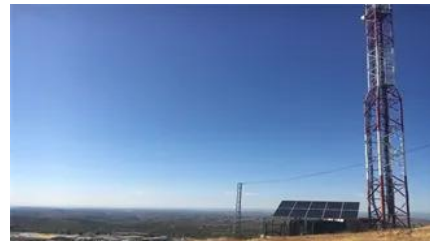
### **Do I need "Distributed Link Tracking Client"?**

Do I need "Distributed Link Tracking Client"?  
Read up on it, cant quite make it out if it's to my disadvantage (and how) in every day Computer life if I have it disabled.



[DistributedCOM permission settings Error 10016 -should I resolve this?](#)

Inside W10's Event Viewer, I see an error with ID of 10016 (DistributedCOM). Its error description is - The application-specific permission settings d



### **DistributedCOM Error. Solved**

Good explanation on the DCOM & RPC stuff, Wynona. Nice job! --Ed-- PS: I still have a paid-for copy of SpinRite sitting in my little tub 'o USB flash drives, right in front of me.

A reliable and efficient power distribution solution designed for photovoltaic grid-connected systems. The GGD cabinet integrates protection, control, measurement, and monitoring functions, ensuring safe,



**Event ID 10016, DistributedCOM**

Also, the outcome is that, under normal conditions, the Microsoft Distributed Transaction Coordinator (MSDTC) service establishes a secure connection with the local System (Computer), not

[Mobile Energy Storage System & Energy Storage Cabinet, China](#)

Grid connected cabinet is an electrical device used to connect distributed energy sources (such as photovoltaic power generation systems, small wind power generation systems, energy storage



**DistributedCOM Error. Solved**

Distributed Component Object Model (DCOM) is a proprietary Microsoft technology for communication between software components on networked computers. DCOM, which originally

**GRID CONNECTED ENERGY STORAGE SYSTEMS**

Energy Storage Cabinet is a vital part of modern energy management system, especially when storing and dispatching energy between renewable energy (such as solar energy and wind energy) and



## Contact Us

---

For catalog requests, pricing, or partnerships, please visit:  
<https://www.peyronies.us>