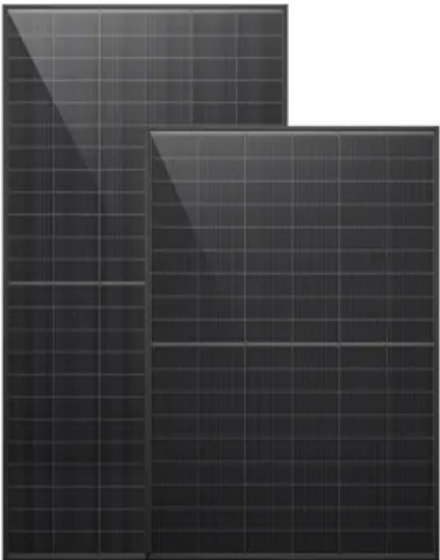


Energy storage cabinet battery string construction and installation



Energy storage cabinet battery string construction and installation



[Understanding ammonia energy's tradeoffs around the world](#)

MIT Energy Initiative researchers calculated the economic and environmental impact of future ammonia energy production and trade pathways.

[The BESS System: Construction, Commissioning, and O&M Guide](#)

The guide is divided into three main sections: construction and installation, commissioning, and operation & maintenance. It covers various aspects such as foundation construction, battery and



Evelyn Wang: A new energy source at MIT

As MIT's first vice president for energy and climate, Evelyn Wang is working to broaden MIT's research portfolio, scale up existing innovations, seek new breakthroughs, and channel

Explained: Generative AI's environmental impact

MIT News explores the environmental and sustainability implications of generative AI technologies and applications.





[A new approach could fractionate crude oil using much less energy](#)

MIT engineers developed a membrane that filters the components of crude oil by their molecular size, an advance that could dramatically reduce the amount of energy needed for crude oil

Energy Storage & Battery System , BEI Construction

BEI Construction has the engineering, electrical and implementation expertise required on energy storage construction projects (BESS) and can deliver battery



[IR N-4: Modular Battery Energy Storage Systems: 2022 CBC and](#)

This Interpretation of Regulations (IR) clarifies specific code requirements relating to battery energy storage systems (BESS) consisting of prefabricated modular structures not on or inside a building for

[SigenStack Energy Storage System Installation Guide](#)

o You are advised to install the equipment in a location where you can easily access, install, operate, maintain it, and view the indicator status. o Do not install the equipment in a smoky, flammable, or



[Energy , MIT News , Massachusetts Institute of Technology](#)

Massachusetts Clean Energy Center CEO MBA '12 Emily Reichert highlights the state government's

unique approach to fostering and keeping clean energy innovation.

Galaxy Lithium-ion Battery Cabinet

Only for installing the battery cabinet in a new location: Follow the installation manual to install the battery cabinet in the new location. See Installation Procedure, page 18 for installation overview.



[Next-generation geothermal energy: Promise, progress, and challenges](#)

The millimeter-wave drilling technology invented at PSFC and being commercialized by Quaise Energy is the highest-profile next-generation geothermal innovation to emerge from MIT so

[How artificial intelligence can help achieve a clean energy future](#)

A look at how AI can be used to help support the clean energy transition by helping to manage power grid operations, plan infrastructure investments, guide the development of novel



[MIT engineers create an energy-storing supercapacitor from ancient](#)

MIT engineers created a carbon-cement supercapacitor that can store large amounts of energy. Made of just cement, water, and carbon black, the device could form the basis for

46 CFR Part 111 Subpart 111.15 -

Each large battery installation must be in a room that is only for batteries or a box on deck. Installed electrical equipment must meet the hazardous location requirements in subpart 111.105 of this part.



Making clean energy investments more successful

New research emphasizes the importance of well-validated models and forecasting tools in evaluating choices for investments in clean energy technologies and policies by governments and

[MIT Energy Initiative conference spotlights research](#)

At the MIT Energy Initiative's Annual Research Conference, industry leaders agreed collaboration is key to advancing critical technologies amidst a changing energy landscape.



Contact Us

For catalog requests, pricing, or partnerships, please visit:
<https://www.peyronies.us>