

Energy storage inverter and BMS communication



Overview

RS485, UART, and CAN are industry-standard communication interfaces that let the BMS "talk" to the inverter: The BMS sends real-time data (battery voltage, state of charge/SoC, temperature, current) to the inverter.

Energy storage inverter and BMS communication



[MIT Energy Initiative conference spotlights research](#)

At the MIT Energy Initiative's Annual Research Conference, industry leaders agreed collaboration is key to advancing critical technologies amidst a changing energy landscape.

Making clean energy investments more successful

New research emphasizes the importance of well-validated models and forecasting tools in evaluating choices for investments in clean energy technologies and policies by governments and



[How artificial intelligence can help achieve a clean energy future](#)

A look at how AI can be used to help support the clean energy transition by helping to manage power grid operations, plan infrastructure investments, guide the development of novel

[How to Determine if an Inverter Can Communicate with](#)

With more than 8 years of experience in R&D and manufacturing in the energy storage field, Seplos has developed a BMS that can communicate with most



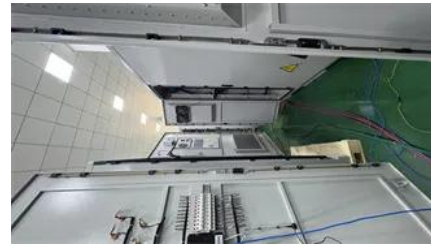
[MIT engineers create an energy-storing supercapacitor from ancient](#)

MIT engineers created a carbon-cement supercapacitor that can store large amounts of energy. Made of just cement, water, and carbon

black, the device could form the basis for

[Practical Guide to Cross-Brand Inverter and Lithium Battery BMS](#)

In this article, we'll guide you step by step on how to connect a Sunflx battery to an inverter to make sure the BMS communicates correctly.



[Next-generation geothermal energy: Promise, progress, and challenges](#)

Geothermal energy, a clean, continuous energy source accessible in many locations, has been slow to catch on. Nearly 2,000 years ago, the Romans made extensive use of geothermal



Explained: Generative AI's environmental impact

MIT News explores the environmental and sustainability implications of generative AI technologies and applications.



[Practical Guide: Connecting BMS with Hybrid Inverters](#)

Connecting a BMS to a hybrid inverter isn't just a wiring task-it's a critical system integration step. Doing it right ensures accurate SOC, smart

[Study: Fusion energy could play a major role in the global response to](#)

Investigators in the MIT Energy Initiative and the MIT Plasma Science and Fusion Center have found that - depending on its future cost and performance - fusion energy has the potential



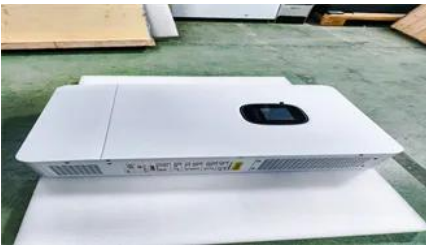
[New facility to accelerate materials solutions for fusion energy](#)



The new Schmidt Laboratory for Materials in Nuclear Technologies (LMNT) at the MIT Plasma Science and Fusion Center accelerates fusion materials testing using cyclotron proton beam

[A new approach could fractionate crude oil using much less energy](#)

MIT engineers developed a membrane that filters the components of crude oil by their molecular size, an advance that could dramatically reduce the amount of energy needed for crude oil



A Guide to BMS Communication Protocols

An in-depth guide covers CAN Bus, UART, RS485, Bluetooth, and more, helping you choose the right BMS communication protocols.

[Energy](#) , [MIT News](#) , [Massachusetts Institute of Technology](#)

Massachusetts Clean Energy Center CEO MBA '12 Emily Reichert highlights the state government's unique approach to fostering and keeping clean energy innovation.



Contact Us

For catalog requests, pricing, or partnerships, please visit:
<https://www.peyronies.us>