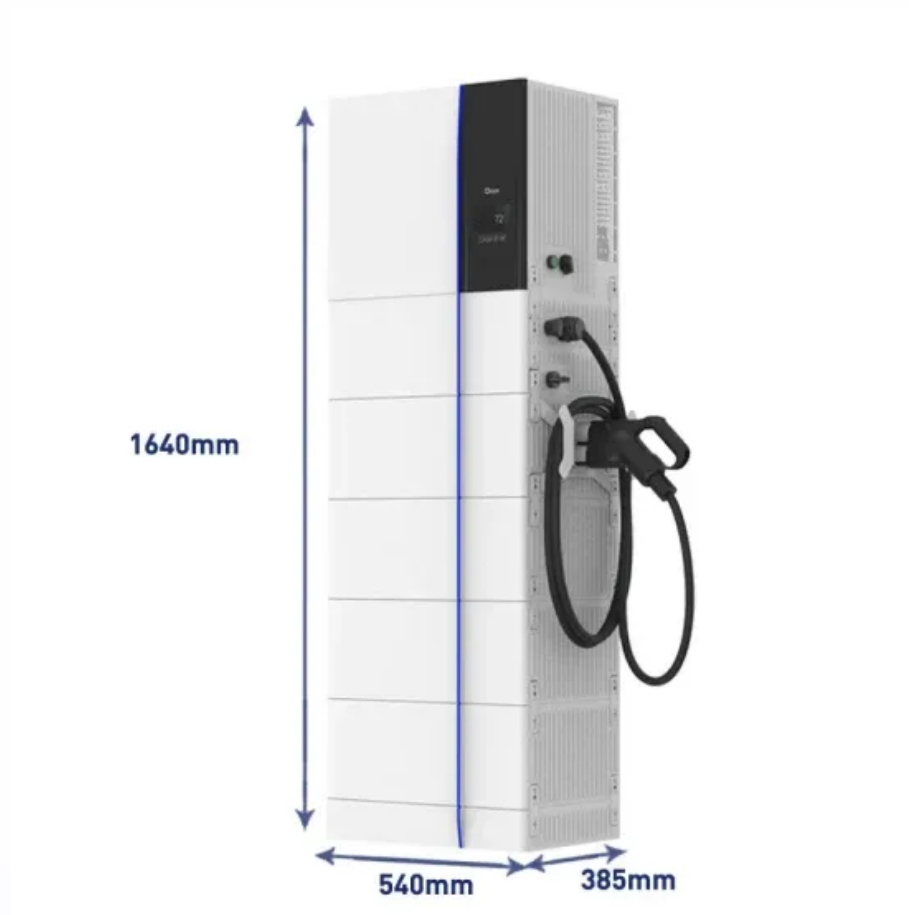


# Energy storage system air cooling system structure



## Overview

---

A conventional compressor-based system contains three fundamental parts: 1) the evaporator, 2) the compressor, and 3) the condenser. The evaporator (cold section) is where the pressurized refrigerant passes through the expansion valve and expands, boils, and evaporates.

## Energy storage system air cooling system structure

---



[A new approach could fractionate crude oil using much less energy](#)

MIT engineers developed a membrane that filters the components of crude oil by their molecular size, an advance that could dramatically reduce the amount of energy needed for crude oil

[Structure optimization of air cooling battery thermal management](#)

Abstract Air cooling is a common and valid method to improve the heat distribution of battery thermal management system (BTMS). To further improve the heat distribution in BTMS, the



[MIT engineers create an energy-storing supercapacitor from ancient](#)

MIT engineers created a carbon-cement supercapacitor that can store large amounts of energy. Made of just cement, water, and carbon black, the device could form the basis for

### Energy Storage System Cooling

Laird Thermal Systems' Outdoor Cooler Series is an air-to-air thermoelectric cooler assembly that offers dependable, compact performance to cool enclosures in an outdoor environment.



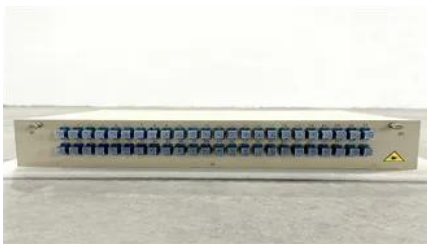
[How artificial intelligence can help achieve a clean energy future](#)

A look at how AI can be used to help support the clean energy transition by helping to manage

power grid operations, plan infrastructure investments, guide the development of novel

### Air-Cooled Battery Energy Storage System

Tutorial model of an air-cooled battery energy storage system (BESS). The model includes conjugate heat transfer with turbulent flow, fan curves, internal screens,



### [Next-generation geothermal energy: Promise, progress, and challenges](#)

Geothermal energy, a clean, continuous energy source accessible in many locations, has been slow to catch on. Nearly 2,000 years ago, the Romans made extensive use of geothermal

### Explained: Generative AI's environmental impact

MIT News explores the environmental and sustainability implications of generative AI technologies and applications.



### Making clean energy investments more successful

New research emphasizes the importance of well-validated models and forecasting tools in evaluating choices for investments in clean energy technologies and policies by governments and

### [New facility to accelerate materials solutions for fusion energy](#)

The new Schmidt Laboratory for Materials in Nuclear Technologies (LMNT) at the MIT Plasma Science and Fusion Center accelerates fusion materials testing using cyclotron proton beam





[Study: Fusion energy could play a major role in the global response to](#)

Investigators in the MIT Energy Initiative and the MIT Plasma Science and Fusion Center have found that - depending on its future cost and performance - fusion energy has the potential

[MIT Energy Initiative conference spotlights research](#)

At the MIT Energy Initiative's Annual Research Conference, industry leaders agreed collaboration is key to advancing critical technologies amidst a changing energy landscape.



[Energy](#) , [MIT News](#) , [Massachusetts Institute of Technology](#)

Massachusetts Clean Energy Center CEO MBA '12 Emily Reichert highlights the state government's unique approach to fostering and keeping clean energy innovation.



## Contact Us

---

For catalog requests, pricing, or partnerships, please visit:  
<https://www.peyronies.us>