

Grid-connected inverter is better



Grid-connected inverter is better



CSS grid layout

Like tables, grid layout enables an author to align elements into columns and rows. However, many more layouts are either possible or easier with CSS grid than they were with tables.

[A Review of Grid-Connected Inverters and Control Methods Under](#)

Beginning with an introduction to the fundamentals of grid-connected inverters, the paper elucidates the impact of unbalanced grid voltages on their performance.



[Grid Tied Inverter vs Off-Grid Which One Suits You Best](#)

Explore the difference between a grid tied inverter and off-grid system to find the best energy solution for your home or business needs.

CSS Grid Layout

The Grid Layout Module allows developers to easily create complex web layouts. The Grid Layout Module makes it easy to design a responsive layout structure, without using float or positioning.



[How Do On Grid and Off Grid Inverters Differ in Performance and](#)

Grid-connected inverters fall into groups like those for solar, wind, power tools, and other generators. They match the utility network by checking voltage, frequency, and phase before sending

CSS Grid Generator (Drag & Drop)

CSS grid generator is a tool that helps developers create custom CSS grid layouts more easily. The generator allows users to specify the number of columns, rows, the gutter size.



[Solar Integration: Inverters and Grid Services Basics](#)

As more solar systems are added to the grid, more inverters are being connected to the grid than ever before. Inverter-based generation can produce energy at any frequency and does not have the same



[A comprehensive review of grid-connected inverter topologies and](#)

This comprehensive review examines grid-connected inverter technologies from 2020 to 2025, revealing critical insights that fundamentally challenge industry assumptions about

Grid by Example

Get Started Guide A structured guide to resources that will help you to start learning CSS Grid Layout.



CSS grid layout

CSS grid layout is a two-dimensional layout system for the web. It lets you organize content into rows and columns and offers many features to simplify the creation of complex layouts.



Grid-Connected Inverters: The Ultimate Guide



A Complete Guide to CSS Grid Layout , CSS-Tricks

Our comprehensive guide to CSS grid, focusing on all the settings both for the grid parent container and the grid child elements.

Discover the crucial role of grid-connected inverters in Smart Grids, their benefits, and the technology behind them.



Basic concepts of grid layout

This guide introduces the CSS grid layout and the terminology that is part of the CSS grid layout specification. The features shown in this overview will then be explained in greater detail in the

[Grid Tied vs. Off Grid Solar Inverter: Pros and Cons](#)

Discover the pros and cons of grid-tied vs. off grid solar inverters to find the best system for your energy needs, budget, and long-term independence.



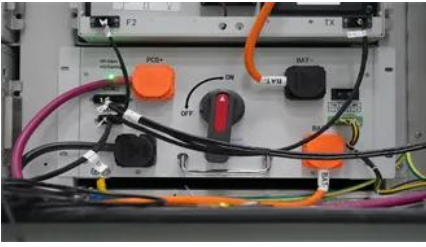
Best Solar Inverters 2025

By understanding how On-Grid inverters work, their types, and key selection criteria, you can make a well-informed decision that maximizes your investment

[Hybrid Inverter vs Grid-Tie Inverter: A Guide for Solar Professionals](#)

This guide breaks down the hybrid inverter vs grid-tie inverter debate in plain terms. We'll explore their technical differences, practical uses, and how they fit into the push for energy





[GRID: A simple visual cheatsheet for CSS Grid Layout](#)

Learn all about the properties available in CSS Grid Layout through simple visual examples.

Contact Us

For catalog requests, pricing, or partnerships, please visit:
<https://www.peyronies.us>