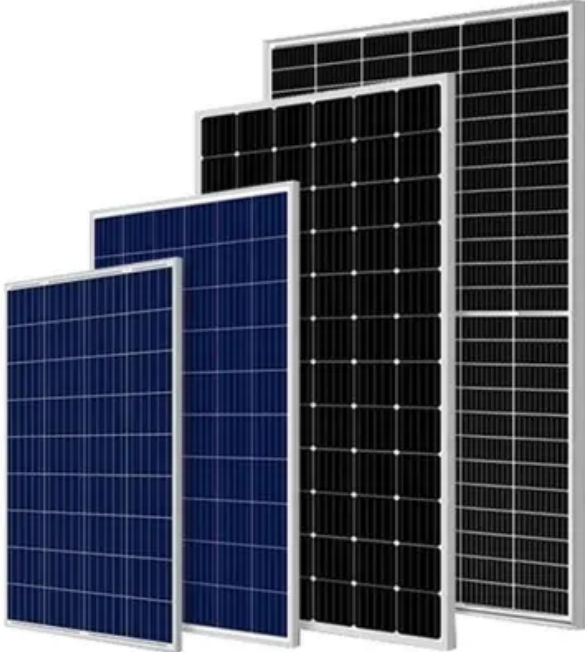


# How is the battery cabinet solar container lithium battery project



## Overview

---

Summary: This article explores advancements in energy storage container battery cabinet production, focusing on applications in renewable energy integration, industrial backup systems, and grid stabilization. Every. We combine high energy density batteries, power conversion and control systems in an upgraded shipping container package. Lithium batteries are CATL brand, whose LFP chemistry packs 1 MWh of energy into a battery volume of 2. It's like having a portable powerhouse that can be deployed wherever needed. As renewable energy adoption skyrockets (global energy storage installations hit 45 GW in 2023!), these modular systems are stealing the spotlight for good reason.

## How is the battery cabinet solar container lithium battery project

---



### Main Battery Change

Going to change the service battery in my 15 V40cc D2. Anything I need to be ware of or look out for ??

### Low battery charge error , Volvo V40 Forums

Hello everyone, I just bought my first car, a 2014 Volvo V40 T3, and a warning appears on the dashboard that says 'low battery charge.' The car is recently



### [Multiple Warning Lights/Error Messages/Battery deterioration](#)

TBH I would look at a replacement battery on the back of that info - but can't you get one from where you bought it? I don't know what a compliance centre is but does the vehicle come with

### [How Are Lithium Battery Energy Storage Cabinets Manufactured?](#)

Lithium battery energy storage cabinets are revolutionizing industries from renewable energy to commercial power management. This article breaks down their manufacturing process, highlights



### Low battery charge message



## Household Battery Recycling

Household battery recycling locations Lead-acid batteries, or "automotive type batteries," are banned from disposal. Consumers may bring lead-acid batteries to any Wisconsin retailer that sells these



## Containerized energy storage , Microgreen.ca

We combine high energy density batteries, power conversion and control systems in an upgraded shipping container package. Lithium batteries are CATL brand,



The low battery charge message relates to the main battery. On vehicles with stop/start systems and intelligent alternators, the vehicle battery is designed to operate at around 80% SOC, to



## Replacement battery

Hiya, I have an early 2014 D2 cross country automatic. It keeps complaining about battery level, even after our (rare but very long drives). So I think the battery is shot. Funnily, when I put my



## Main Battery Replacement

Since that battery also supplies power to the ECU memory when the car is switched off, as well as powering the stop/start system , don't ignore it. Like the main battery, Volvo recommend

## Secondary Battery

My main battery just died, had it replaced with same, and car kept giving me Battery charging, so no stop start. When stop/start worked, it was for about 10 sec, and car would start, with



## Battery issues

I've had both batteries replaced (with the correct models), done a 100 mile trip, overnight smart battery charge, charging voltage is fine, system messages cleared but I am still getting "low

## New Battery

So I think the time has come to replace the main battery. Its the original Volvo 70ah EFB battery that was on the car from new in 2016.. The car starts fine but I keep getting the "Low Battery



## Contact Us

---

For catalog requests, pricing, or partnerships, please visit:  
<https://www.peyronies.us>