

How many phases of electricity does a communication base station use



Overview

For base stations, this journey culminates in three-phase AC power being connected to the system.

How many phases of electricity does a communication base station



MANY Definition & Meaning , Dictionary

MANY definition: constituting or forming a large number; numerous. See examples of many used in a sentence.

Base Stations

Base stations form a key part of modern wireless communication networks because they offer some crucial advantages, such as wide coverage,



[many , Dictionaries and vocabulary tools for English](#)

many or much? Many is used with words for things that we can count. Much is used with words for things that we cannot count. Compare: Do you have many things to do today? Do you have much

MANY Definition & Meaning

The meaning of MANY is consisting of or amounting to a large but indefinite number. How to use many in a sentence.

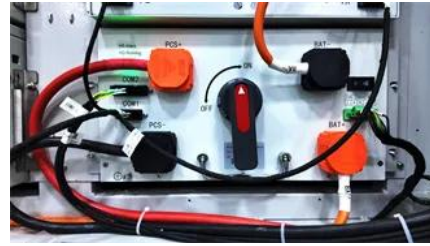


[Complete Guide to 5G Base Station Construction , Key Steps](#)

For base stations, this journey culminates in three-phase AC power being connected to the system. This is referred to as mains power input, which represents the final stage of the power

[What Is a Telecom Base Station and How Does It Work?](#)

In simple terms, the base station uses radio signals to cover a certain geographic area, allowing mobile devices within this area to connect to the communication



[Measurements and Modelling of Base Station Power Consumption](#)

Base stations represent the main contributor to the energy consumption of a mobile cellular network. Since traffic load in mobile networks significantly varies during a working or weekend day, it is

[MANY definition and meaning , Collins English Dictionary](#)

You use many to indicate that you are talking about a large number of people or things. I don't think many people would argue with that. Not many films are made in Finland. Do you keep many books



What are Cell Towers and How Do They Work?

Do you ever wonder how your phone stays connected no matter where you go? The secret behind this constant connection lies in a network of

[How many phases of power should a communication base station](#)

A cellular base station can use anywhere from 1 to 5 kW power per hour depending upon the number of transceivers attached to the base station, the age of cell towers, and energy needed for air conditioning.



MANY , English meaning



Base station subsystem

Overview
Base transceiver station
Base station controller
Packet control unit
BSS interfaces
See also

The base transceiver station, or BTS, contains the equipment for transmitting and receiving radio signals (transceivers), antennas, and equipment for encrypting and decrypting communications with the base station controller (BSC). Typically a BTS for anything other than a picocell will have several transceivers (TRXs) which allow it to serve several different frequencies and different sectors of the cell (in the case of sect

We use the quantifiers much, many, a lot of, lots of to talk about quantities, amounts and degree. We can use them with a noun (as a determiner) or without a noun (as a pronoun).



Basic components of a 5G base station

With the mass construction of 5G base stations, the backup batteries of base stations remain idle for most of the time. It is necessary to explore these

Many Definition & Meaning

Many definition: Amounting to or consisting of a large indefinite number.



Communication Base Station Energy Storage Systems

A single macro base station now consumes 3-5kW - triple its 4G predecessor - while network operators face unprecedented pressure to maintain uptime during grid failures.

What is a Base Station? - From Communication Core

How Does a Base Station Work? A base station's operation can be summarized in three steps: wireless transmission, signal conversion, and



Contact Us

For catalog requests, pricing, or partnerships, please visit:
<https://www.peyronies.us>