

How much does photovoltaic panel glass weigh



All-in-one Integrated Stackable Energy Storage System

20Kwh

30Kwh



Overview

Most commercial solar panels use glass in the 3-4mm range. Here's why:
Transmittance: Around 91-93% of sunlight passes through-enough to keep efficiency high. But here's something you might not have considered: glass weight significantly impacts everything from installation costs to long-term maintenance. Let's explore why this unsung hero deserves your attention.
Why G When planning solar installations, most people focus on wattage or efficiency. What is the qualified weight of photov t -- Glass must be of a certain weight for solar panels. The industry standard wei ht for a 3. This weight makes them manageable, but still requires careful lifting during installation. But why does this matter?

Let's break this down like a sunlight beam hitting a solar cel HOME / How Much Glass Does a Photovoltaic Panel Have?

Let's Crack the Code How Much. Residential solar panels usually have 60 cells and weigh about 40 pounds each.

How much does photovoltaic panel glass weigh



MUCH Definition & Meaning

The meaning of MUCH is great in quantity, amount, extent, or degree. How to use much in a sentence.

What does much mean?

Much is an adjective that refers to a large quantity, amount, or degree of something. It indicates a substantial extent or level of something, generally implying a significant or notable difference or



[What is the qualified weight of photovoltaic panel glass](#)

Function of Solar Panel Glass. Solar panel glass serves multiple important functions within a solar panel system: Protection: Solar glass acts as a protective barrier, shielding the solar

How Much Do Solar Panels Weigh? A Complete Guide

In general, residential solar panels can weigh as low as 35 lbs (kg) and as high as 50 lbs (in kg). On average, most residential solar panels weigh



The Ultimate Guide to Solar Panel Size, Weight

Find the exact solar panel size & weight in our



Much Definition & Meaning , YourDictionary

Much definition: Great in quantity, degree, or extent.



[MUCH definition and meaning , Collins English Dictionary](#)

You use much to indicate the great intensity, extent, or degree of something such as an action, feeling, or change. Much is usually used with 'so', 'too', and 'very', and in negative clauses with this meaning.



2025 guide. Our complete chart compares models by ft/cm and lbs/kg to help you plan your



average photovoltaic solar panel weight guide

Generally, standard residential photovoltaic panels weigh between 40 and 50 pounds (about 18 to 22 kilograms). This weight makes them

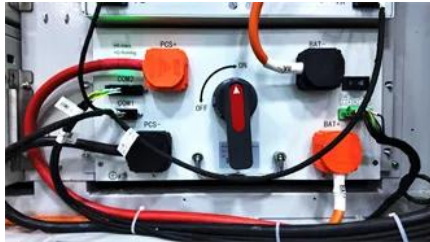


[Transmittance and weight of solar panels with different thickness of glass](#)

Most commercial solar panels use glass in the 3-4mm range . Here's why: Transmittance: Around 91-93% of sunlight passes through-enough to keep efficiency high. Weight: Adds about 10

How Much Do Solar Panels Weigh?

Commercial solar panels are slightly larger, usually around 72 cells, and weigh around 50 pounds each. The constituent solar cells only weigh a few hundred



[How Much Glass Does a Photovoltaic Panel Have? Let's Crack the Code](#)

Fun fact: The glass alone accounts for 15-20% of a panel's total weight. That's why installers joke about their "glass gainz" after hauling panels all day! Not all solar glass is created equal. Here's how it

MUCH , English meaning

MUCH definition: 1. a large amount or to a large degree: 2. a far larger amount of something than you want or need . Learn more.



How Much Does a Solar Panel Weigh?

Panels with a glass-on-glass or bifacial design, which use a second sheet of glass instead of a polymer backsheet, inherently weigh more, with some models exceeding 50 pounds due

How Much Do Solar Panels Weigh? 1.30 - 2,608.7 lbs

The most important thing, however, is that we see that the solar panel weight per square foot has quite a thin range (from 2 to 2.5 lbs per sq ft). By averaging





[Glass Weight of Solar Photovoltaic Panels: Why It Matters for Your](#)

But here's something you might not have considered: glass weight significantly impacts everything from installation costs to long-term maintenance. Let's explore why this unsung hero deserves your

Contact Us

For catalog requests, pricing, or partnerships, please visit:
<https://www.peyronies.us>