

How thick and tall is the wind turbine tower



How thick and tall is the wind turbine tower



Design Parameters of Wind Turbine Tower

Height and type of wind turbine tower changes from turbine to turbine [Manwell 2009]. The tower height of a small scale wind turbine can vary from 15 meters to 25 meters but this limit is not

How Tall Are Wind Turbines?

Modern wind turbines vary dramatically in height. They range from small units of several dozen meters to massive offshore structures reaching



[THICK definition and meaning , Collins English Dictionary](#)

If something that consists of several things is thick, it has a large number of them very close together. She inherited our father's thick, wavy hair. They walked through thick forest.

THICK Definition & Meaning , Dictionary

THICK definition: having relatively great extent from one surface or side to the opposite; not thin. See examples of thick used in a sentence.

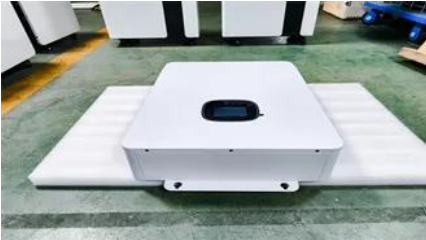


Dimensions of the wind turbine tower.

A very detailed 2D-solid finite element model is developed representing the load-carrying box girder of a wind turbine blade.

T.3 Tower , Guide to an offshore wind farm

Towers are generally tapered, with a top diameter of about 6 m and a base diameter of about 10 m for a 15 MW turbine. Design is driven by fatigue and



How Tall is the Tower of a Wind Turbine?

In this article, we're going to break down how tall turbine towers can get, as well as the factors that dictate their size. The average height for the tower of a wind turbine is between 60 and

[How Tall Are Wind Turbines? Manufacturing, Facts & FAQ](#)

While taller wind turbines mean stronger winds and more energy potential, they come with physical constraints. They have a limit to how tall they



How Tall Are Wind Turbines? (2025 Guide)

GE's Haliade-X, the world's tallest wind turbine, has a 138-metre tower and stretches to 248 metres with its rotor-making it taller than many urban skyscrapers.

How Thick Is A Wind Turbine Tower

The average height of a wind turbine installed in Europe is around 80 meters. Modern towers typically have a lift inside, a ladder, and several intermediate platforms. The system is quite



THICK , English meaning

thick adjective [-er/-est only] (NOT FLOWING) (of a liquid) not flowing easily: thick gravy / soup

Wind Power Plant Dimensions

The technical specifications and wind power plant dimensions are subject to change and modifications. Wind turbines from other companies do not necessarily



How Tall Are Wind Turbines in Feet?

The height of wind turbines varies considerably, but on average, modern utility-scale turbines are about 280 to 490 feet tall. This answer explains more about the different dimensions and

Contact Us

For catalog requests, pricing, or partnerships, please visit:
<https://www.peyronies.us>