

How to dismantle the turbine shaft of a wind turbine



Overview

To remove the turbine shaft, hold one hand at the rear of the turbine to protect the shaft (14) and press the shaft out of the body (21) with the other hand. A method and system are provided for removing or installing a main shaft and attached bearing assembly of a wind turbine from a bedplate. Heating the bearings are utilized to assure controlled expansion of bearings prior to installation. This process is part of Western Machine's Main. more Western. Dismantling a wind turbine involves a systematic process to safely and efficiently remove the turbine components. This includes conducting a thorough risk assessment, ensuring. Remove the four screws (6) which hold the turbine rotor (7) to the shaft (14).

How to dismantle the turbine shaft of a wind turbine



US20180313329A1

A method and system are provided for removing or installing a main shaft and attached main bearing assembly of a wind turbine from a bedplate. The method and system use rigging and

Dismantle

To take apart; disassemble; tear down. b. To put an end to in a gradual systematic way: dismantling the cumbersome regulations for interstate trucking. 2. To strip of furnishings or equipment: dismantled



DISMANTLE , English meaning

DISMANTLE definition: 1. to take a machine apart or to come apart into separate pieces: 2. to get rid of a system or . Learn more.

Wind turbine dismantling

A detailed decommissioning plan is developed, outlining the dismantling sequence, equipment needed, and safety measures to be followed. The plan takes into



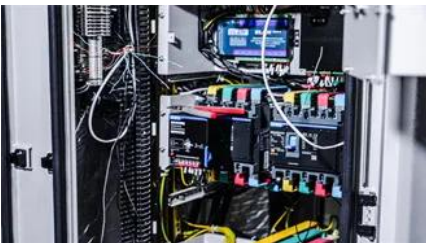
dismantle or disassemble?

Learn the correct usage of "dismantle" and "disassemble" in English. Discover differences,



Turbine Disassembly and Repair (RA-12, RA-20)

Follow these steps to remove the turbine shaft from the RA-12 or RA-20 turbine. Place the turbine body (21) on wooden blocks so only the turbine body contacts the blocks. You do not want the turbine



DISMANTLE on Steam

? Break over 99% of all objects for materials with the right tools. No barrier will stop you. ? Fight with (or run away) nasty and vile creatures of the post-apocalyptic era. ? Explore the handcrafted open world



examples, alternatives and tips for choosing the right phrase.



[DISMANTLE definition and meaning, Collins English Dictionary](#)

If you dismantle a machine or structure, you carefully separate it into its different parts. He asked for immediate help to dismantle the warheads.



DISMANTLE Definition & Meaning

The meaning of DISMANTLE is to disconnect the pieces of; also : to destroy the integrity or functioning of. How to use dismantle in a sentence.

Wind Turbine Shaft & Components Repair

Initial inspection and setup in WMW-designed wind turbine wind shaft disassembly fixture. Complete disassembly including retaining nut, sealing assemblies,



Dismantle

To take something apart or down is to dismantle it. If you dismantle a computer to see what it looks like inside, you better know how to put it back together, or you might be looking at the inside of your room

How to dismantle a huge wind turbine?

Pulling apart a giant wind turbine is not an easy process. #PlanetA #windenergy #engineering more



Dismantle

Concert events listed are based on the artist featured in the video you are watching, channels you have subscribed to, your past activity while signed in to , including artists you search

DYSMANTLE

Dysmantle objects and collect the sweet nectar of the old world: plastics, rubber, and metals. Use the materials to invent and craft powerful new items and upgrades. Explore the ruins of the past and





Wind turbine main shaft repair

Follow SKF's capabilities to repair and upgrade wind main shaft solutions. Understanding the root cause of the failure, and make sure that it won't happen again, is crucial to avoid unnecessary costs and

[A method for dismantling a wind turbine gearbox from a main shaft](#)

The invention relates to a method for dismantling a wind turbine gearbox from a main shaft in the nacelle of a wind turbine, wherein a first end of the main shaft is connected to



[System and method for removing or installing a main shaft of a wind](#)

The present disclosure relates generally to wind turbines, and more particularly to systems and methods for removing and/or installing a main shaft to and from a nacelle located

Wind Turbine Main Shaft Disassembly & Assembly

Western Machine Works LLC worked on this wind turbine main shaft bearing disassembly and assembly for a leading wind turbine OEM.



6kW Wind Turbine main bearing replacement

In this video I show the solution for the main challenge of disassembly of the main shaft and alternator from the turbine chassis to allow for the two main bearings replacement. more.

DISMANTLE Definition & Meaning , Dictionary

DISMANTLE definition: to deprive or strip of apparatus, furniture, equipment, defenses, etc.. See examples of dismantle used in a sentence.



Contact Us

For catalog requests, pricing, or partnerships, please visit:
<https://www.peyronies.us>