

How to use the communication base station



SMART GRID & HOME



Overview

From making a phone call in a busy city to streaming videos in remote villages, the ability to stay connected relies on one critical piece of infrastructure: the telecom base station. Often hidden in plain sight on rooftops or towers, base stations are the backbone of.

How to use the communication base station



[use, n. meanings, etymology and more . Oxford English Dictionary](#)

to come (also fall, go, etc.) into use: to be introduced into customary or habitual employment or practice; to begin to be used; esp. (of vocabulary, syntax, etc.) to be introduced into common usage.

Base Stations

Base stations form a key part of modern wireless communication networks because they offer some crucial advantages, such as wide coverage,



[USE definition and meaning . Collins English Dictionary](#)

If you have a use for something, you need it or can find something to do with it.

[What Does a Base Station Do and Why Is It Essential](#)

From making a phone call in a busy city to streaming videos in remote villages, the ability to stay connected relies on one critical piece of



Phone Base

Using a phone connected to the Wireless Home Phone Base, place and receive calls as you normally would. The Wireless Home Phone Base supports both cordless and corded phone dialing methods.

USE Definition & Meaning , Dictionary

USE definition: to employ for some purpose; put into service; make use of. See examples of use used in a sentence.

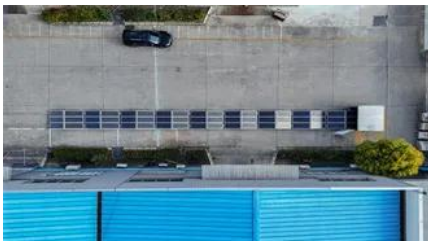


How Telecommunication Towers Work: The Backbone

Telecom towers transmit and receive RF signals, forming a network of cells that enable communication. They are built as monopoles, lattices, or guyed

[What Is a Base Station? Definition and How It Works](#)

Define the central communication hubs of modern wireless technology. Learn how base stations manage capacity and ensure reliable connections.



[Base Stations and Cell Towers: The Pillars of Mobile Connectivity](#)

Base stations use antennas mounted on cell towers to send and receive radio signals to and from mobile devices within their coverage area. This communication enables users to make

Chapter 7, Dispatch Radio Communications

Area Base Stations. Purpose. Non-dispatch offices are equipped with a local base station and remote-control console. Base stations are intended to provide limited radio capability for operations when the



USE Definition & Meaning

The meaning of USE is to put into action or service : avail oneself of : employ -often used with for; often followed by to + a verb. How to



Use Definition & Meaning

Use definition: To put into service or employ for a purpose.



Use: Definition, Meaning, and Examples

The word "use" refers to employing or utilizing something for a particular purpose, and it can function as both a noun and a verb. Its versatility allows it to fit into various contexts, whether



USE , English meaning

USE definition: 1. to put something such as a tool, skill, or building to a particular purpose: 2. to reduce the. Learn more.

use use in a sentence.



Department of the Highway Patrol (CHP) (CA)

It is important to realize that base stations transmit from higher elevations and at much greater power than mobile units do. For this reason the base frequency can be heard over long



[Pairing a Base Station: A Comprehensive Guide to Seamless](#)

Pairing a base station is a crucial step in establishing a reliable and efficient communication network. By understanding the different types of base stations, the pairing process,





[DSN Dialing Instructions: Your Go-to Guide to Calling Out](#)

Service members need accurate DSN dialing instructions because it's part of daily military life. Using the wrong access code wastes time, blocks

Use Definition & Meaning , Britannica Dictionary

She quickly used up (all of) her inheritance. Don't shower too long and use up (all) the hot water.



Contact Us

For catalog requests, pricing, or partnerships, please visit:
<https://www.peyronies.us>