

Integrated communication base station wind power system



Voltage range:691.2-947.2V

>6000 cycles(100%DOD)

Rated battery capacity:
216KWH (customizable)

EMS communication:
4G/CAN/RS485



Integrated communication base station wind power system



Integrated

When something is integrated, it's united - different things are now together, especially things that used to be apart. Schools haven't always been integrated in this country.

INTEGRATE Definition & Meaning

The meaning of INTEGRATE is to form, coordinate, or blend into a functioning or unified whole : unite. How to use integrate in a sentence.



INTEGRATED Definition & Meaning , Dictionary

INTEGRATED definition: combining or coordinating separate elements so as to provide a harmonious, interrelated whole. See examples of integrated used in a sentence.

Integrated

integrated adjective 1. unified, united, combined, leagued, allied, pooled, collective, affiliated, banded together a fully integrated, supportive society 2. desegregated, racially mixed, unsegregated, non



[Research on Offshore Wind Power Communication System Based on](#)



[INTEGRATE definition and meaning . Collins English Dictionary](#)

If someone integrates into a social group, or is integrated into it, they become part of the group or are accepted into it. He didn't integrate successfully into the village way of life.

In view of the special needs of the communication system, a communication system scheme for offshore wind farms based on 5G technology is proposed.

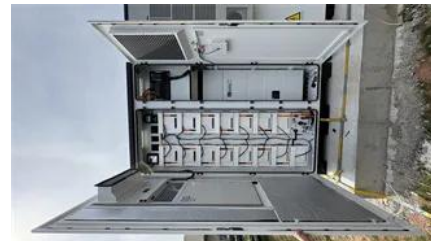


INTEGRATED , English meaning

INTEGRATED definition: 1. with two or more things combined in order to become more effective: 2. consisting of different . Learn more.

[integrated , meaning of integrated in Longman Dictionary of](#)

integrated meaning, definition, what is integrated: an integrated system, institution etc co : Learn more.



[Powering 5G Base Stations with Wind and Solar Energy Storage: A](#)

This article explores the integration of wind and solar energy storage systems with 5G base stations, offering cost-effective and eco-friendly alternatives to traditional power sources.

[Mobile integrated operator communication base station wind power](#)

Why are power systems and communication systems increasingly coupled? Therefore, power systems and communication systems are increasingly coupled. A power system supplies energy, and a



Operating Communication Base Stations With Wind And Solar

The invention relates to a communication base station stand-by power supply system based on an activation-type cell and a wind-solar complementary power supply system.



Hybrid Energy Mobile Wireless Telecom Base Station

Discover the power of our Hybrid Energy Mobile Wireless Station, offering seamless, energy-efficient telecom base site solutions. Designed for versatility with solar, wind, and diesel integration, it



Communication Base Station Wind And Solar Complementary

The wind-solar-diesel hybrid power supply system of the communication base station is composed of a wind turbine, a solar cell module, an integrated controller for hybrid energy.



integrated

to bring together, combine, or incorporate into a whole or into a larger unit: [~ + object (+ into + object)] He integrated several ideas from that novelist into his writing.



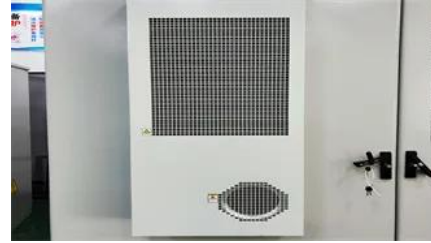


[The connection between communication base station and wind](#)

Discover how hybrid energy systems, combining solar, wind, and battery storage, are transforming telecom base station power, reducing costs, and boosting sustainability.

[Do you know these key points about the wind-solar hybrid power](#)

Our company's wind-solar hybrid power supply system for communication base stations consists of the FD series wind turbines, solar cell modules, an integrated communication power management



integrated adjective

Definition of integrated adjective in Oxford Advanced Learner's Dictionary. Meaning, pronunciation, picture, example sentences, grammar, usage notes, synonyms and more.

[Deployment Of Communication Base Stations And Wind Solar](#)

The wind-solar-diesel hybrid power supply system of the communication base station is composed of a wind turbine, a solar cell module, an integrated controller for hybrid energy.



Contact Us

For catalog requests, pricing, or partnerships, please visit:
<https://www.peyronies.us>