

# Internal structure of a wind turbine generator



## Internal structure of a wind turbine generator

---



### Inside Wind Turbines: Efficiency, Design

In this comprehensive guide, we'll delve into the design, functionality, and maintenance of wind turbines, covering key aspects like blade



### Principle and Structure of Wind Turbine

Wind turbines in wind farms usually have two or three blades with tip speeds of 50~70m/s. The 3-blade impeller usually provides the best efficiency, while the 2



### Internal

Define internal. internal synonyms, internal

[Internal Revenue Service](#) , An official website of the United States

Find IRS forms and answers to tax questions.



### Inside vs. Internal - What's the Difference?

"Inside" refers to something located within the confines of an object or space, while "internal" denotes inherent or essential characteristics within a system or organism.



### Main Parts and Components of Wind Turbines

The rotor, consisting of three blades and a hub, captures wind kinetic energy and converts it into rotational energy. The blades, resembling

pronunciation, internal translation, English dictionary definition of internal. adj. 1. Of, relating to, or located within the limits or surface; inner.



#### **INTERNAL Definition & Meaning , Dictionary**

INTERNAL definition: situated or existing in the interior of something; interior. See examples of internal used in a sentence.

#### **Inside a Wind Turbine: Up Close and Personal**

Before we explore the inside of a wind turbine, we'll need to examine the nacelle, which holds several critical mechanical components. This turbine section sits behind the rounded hub and



#### **INTERNAL , English meaning**

INTERNAL definition: 1. inside the body: 2. inside a person's mind: 3. inside an object or building: . Learn more.

#### **Wind Turbine Structure: Design and Parameters**

Detailed analysis of wind turbine structure, including components, design parameters, and engineering principles for optimal performance and



#### **Interior vs. Internal**

Interior typically refers to the inside or inner part of something, such as the interior of a building or a room. Internal, on the other hand, is more commonly used to describe things that are happening

[How Are Wind Turbines Built? From Foundation to Finish](#)

Discover the precise, multi-stage engineering and logistical planning required to construct a modern, utility-scale wind turbine.



**INTERNAL Definition & Meaning**

The meaning of INTERNAL is existing or situated within the limits or surface of something. How to use internal in a sentence.



**Interoception: Definition, Symptoms & How To Improve**

What is interoception? Interoception is awareness of your body's internal senses or signals. It identifies how you feel.



**'External' vs 'Internal': What's the Difference?**

Prefixes can tell us everything about a word, and teach us about new ones too. Learn the difference between 'External' vs 'Internal' here.



**Wind Turbine Generators: Working, Types, Parts**

Simply put, a wind turbine generator is a device that converts the energy of the wind into electricity. It consists of large blades that spin when the wind blows, turning

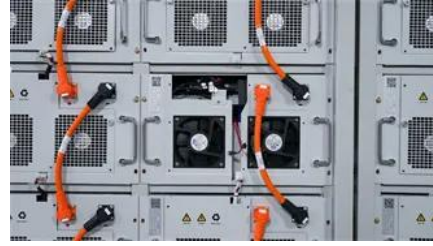


**ternal**

ICANN stated that the adoption of a domain explicitly reserved for internal network usage would help minimize usage of uncoordinated and ad hoc TLDs, such as rp, .home, .lan, and .private.

### Wind turbine design

In addition to the blades, design of a complete wind power system must also address the hub, controls, generator, supporting structure and foundation.



### Wind Turbine Parts and Functions

The article provides an overview of wind turbine components (parts), including the tower, rotor, nacelle, generator, and foundation.

## Contact Us

---

For catalog requests, pricing, or partnerships, please visit:  
<https://www.peyronies.us>