

Inverter relay protection voltage

- ☑ High energy density and long cycle life
- ☑ Modular structure

No need to replace the battery

Shorter charging time

Meets 99% EV car



Inverter relay protection voltage



[Control, Protection and Inverter Submission Requirements](#)

Inverter report and associated data: Specific setting requirements to meet all LGIA technical requirements, i.e. reactive current injection, voltage ride through, return from fault delays, etc

What Is an Inverter?

A power inverter is an electrical component that converts direct current (DC) to alternating current (AC). Inverters are an essential part of many electronic devices and systems, from



Power inverter

A power inverter, inverter, or inverter is a power electronic device or circuitry that changes direct current (DC) to alternating current (AC). The resulting AC frequency obtained depends on the particular

9. Inverter Settings

To set the voltage at which the inverter restarts after low voltage shut-down. - To prevent rapid fluctuation between shut-down and start up, it is recommended that this value be set at least one volt



[Review of SIR Calculations for Distance](#)



[Inverter, Solar Inverter, Home Power Inverter, inverter](#)

Inverter is an online shop of all kinds of power inverters with affordable price, buy your inverter for home, car and solar plant now.



What Is a Power Inverter and How Does It Work?

A power inverter is an electronic device that converts direct current (DC) into alternating current (AC). DC power, typically stored in batteries or generated by solar panels, flows in only one



[Protection and](#)

When the SIR is low, the voltage measured by the relay (the relay voltage) is high for remote line faults. Measurement errors are small in comparison to the relay voltage and an underreaching distance



Power Inverter

We offer inverters for your home, car, fleet truck, boat, RV, camper, trailer, etc. which include off-grid, on-grid, grid tied and inverter chargers. In addition we carry both modified sine wave and pure sine



Smart Relays for Solar Inverters

Texas Instruments relay drivers bring innovation for solar inverters and help accelerate payback time. This flyer looks especially at two specific Panasonic relays: ALFG and HE.

[Why You Shouldn't Install Voltage Stabilizers or Relays](#)

Learn why voltage stabilizers and relays should be installed before inverters, not after. Understand the importance of proper installation for



[How Inverter-Based Resources \(IBRs\) Affect Protection Relay](#)

o The response in the first three cycles during a fault is crucial for transmission protection because the relays must decide whether to operate in that window.

What Does an Inverter Do and How Does It Work?

This comprehensive guide explains what an inverter is, how it works, where it's used, and the benefits it provides in enhancing power stability, sustainability, and convenience.



[What Does an Inverter Do, and How Does It Work , Renogy US](#)

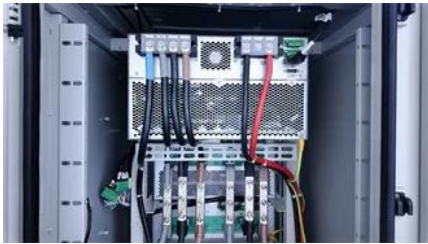
What is an inverter? An inverter is a crucial electronic device that transforms direct current (DC) electricity into alternating current (AC) electricity. Think of it as a power converter that bridges the

Power Inverters: What Are They & How Do They Work?

What is an Inverter? An inverter (or power inverter) is defined as a power electronics device



that converts DC voltage into AC voltage. While DC power is common in small gadgets, most



Protection , Grid Modernization , NLR

NLR researchers are working to address protection issues introduced by the increasing use of inverter-based resources on power grids. Protection issues arise because inverters have fault

[Protection of 100% Inverter-dominated Power Systems with Grid](#)

FRT strategies for GFM IBRs with focus on correct operation of protection relays, protection relay functions that respond correctly to fault currents measured in IBR-dominated systems,



[An ENS-Oriented Voltage Protection Scheme for Inverter-Based](#)

This paper unveils that maintaining a proper voltage protection for inverter-based distributed generations (IBDGs) using overcurrent relays and during the power grids' faults with considerable resistance

Amazon : Power Inverters

Shop through a wide selection of Power Inverters at Amazon . Free shipping and free returns on eligible items.



[What Does An Inverter Do? Complete Guide To Power Conversion](#)



An inverter - the crucial component that bridges the gap between different types of electrical power. As an electrical engineer with over 15 years of experience in power systems, I've

[The Performance and Robustness of Power Protection Schemes for](#)

This investigation contributes to the understanding of OCR protection within the context of evolving power systems and light on the implications of various control techniques employed in PV



Contact Us

For catalog requests, pricing, or partnerships, please visit:
<https://www.peyronies.us>