

LED solar container outdoor power manufacturers



Overview

Our kits include solar sign kits, security cameras power, shed lighting & power, shipping container lighting, bus shelter lighting, mailbox lighting, traffic counting kits, cell tower storage & power units, solar radar containerized power & storage units, off grid.

LED solar container outdoor power manufacturers



LED , Definition, Light, & Facts , Britannica

An LED (light-emitting diode) is a semiconductor device that emits infrared or visible light when charged with an electric current.

Learn About LED Lighting

LED stands for light emitting diode. LED lighting products produce light up to 90% more efficiently than incandescent light bulbs. How do they work? An electrical current passes through a microchip, which

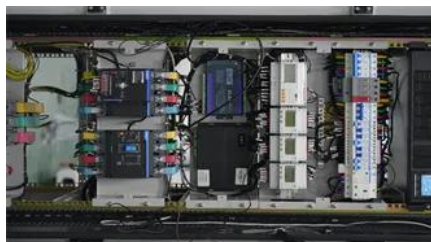


LED Lighting

The light-emitting diode (LED) is today's most energy-efficient and rapidly developing lighting technology. Quality LED light bulbs last longer, are more durable, and offer comparable or better light

[Solar LED Street Light , Outdoor Solar Lights , Solar](#)

ClearWorld was established 11 years ago as a patented, premium outdoor solar LED light in streets with advanced battery storage. This aesthetically pleasing



[What is LED Lighting: Definition, Working Principle and Components](#)

Unlike traditional incandescent bulbs or fluorescent lamps, an LED is a semiconductor device that emits light when electrical current passes through it in the forward direction.

[Solar Powered Lights Manufacturers and Suppliers in the USA](#)

Manufacturer and distributor of LED solarpowered area lighting for various markets including automotive, commercial, educational, hotel property, industrial, residential, and healthcare



Outdoor Solar LED Lighting Systems

Choose a system based on your power needs from our table below or let one of our trained associates build a custom system for your project. These are complete pre-wired systems utilizing high

[Light Emitting Diode \(LED\): Principle, Advantages, and Uses](#)

A light-emitting diode (LED) is a small electronic device that emits light when an electric current flows through it. LED works by passing electricity through a semiconductor, which releases



[Light Emitting Diode Basics , LED Types, Colors and Applications](#)

This article is composed as a brief understanding guide to LED, which includes a brief introduction, the electrical symbol of LED, types, construction, characteristics, LED Drivers and many.

[Light Emitting Diode \(LED\): What is it & How Does it Work?](#)

What is a Light Emitting Diode (LED)? A Light Emitting Diode (LED) is a special type of PN junction diode. The light emitting diode is specially doped and made of a special type of



What is an LED? Complete Guide to LED Technology



Light-emitting diode

A light-emitting diode (LED) is an electronic component that uses a semiconductor to emit light when current flows through it. Electrons in the semiconductor recombine with electron holes, thereby

LEDs are classified as low-power, mid-power, or high-power devices. Multiple LEDs must be combined to achieve the desired light output levels. This compact size enables flexible LED



Solar Street Lights , Commercial Solar Lights

Greenshine New Energy develops & manufactures industry-leading solar outdoor LED lighting systems, providing cost-effective solutions for commercial,

[What Are LED Lights? Working, Types, Benefits & Applications](#)

Learn what LED lights are, how they work, their types, benefits, and applications. Learn about energy savings, lifespan, color quality, and why LEDs are better than incandescent, fluorescent, and halogen



Contact Us

For catalog requests, pricing, or partnerships, please visit:
<https://www.peyronies.us>