

Latest 500kWh inverter cabinet



Overview

The SOLAR WARE 500 advanced multilevel inverter uses a new circuit topology to create 3 output voltage levels. With this new design, the inverter size has also been significantly reduced, achieving the world's smallest 500 kW inverter, with switching loss reduced by 56%.

Latest 500kWh inverter cabinet



Introducing Claude Sonnet 4.5 \ Anthropic

Claude Sonnet 4.5 is the best coding model in the world, strongest model for building complex agents, and best model at using computers.

Introducing Claude 4 \ Anthropic

Discover Claude 4's breakthrough AI capabilities. Experience more reliable, interpretable assistance for complex tasks across work and learning.



Solar Ware 500

The SOLAR WARE 500 advanced multilevel inverter uses a new circuit topology to create 3 output voltage levels. With this new design, the inverter size has also

[Anthropic acquires Vercept to advance Claude's computer use](#)

Vercept is the latest team we've brought into Anthropic, following the acquisition of Bun. We look for teams whose technical ambitions match ours, whose work advances our capabilities,



500 kW/250 kWh mid-node , Aggreko US

Built for rapid deployment, our 500 kW capacity batteries are a fast way to increase your efficiency, on or off the grid. Packaged with everything you need - from fire

Introducing Claude Sonnet 4.6

Claude Sonnet 4.6 is a full upgrade of the model's skills across coding, computer use, long-reasoning, agent planning, knowledge work, and design.



[Advancing Claude in healthcare and the life sciences](#)

In October, we announced Claude for Life Sciences, our latest step in making Claude a productive research partner for scientists and clinicians, and in helping Claude to support those in

Introducing Claude Haiku 4.5 \ Anthropic

Claude Haiku 4.5, our latest small model, is available today to all users. What was recently at the frontier is now cheaper and faster. Five months ago, Claude Sonnet 4 was a state-of



Claude Opus 4.1 \ Anthropic

Getting started We recommend upgrading from Opus 4 to Opus 4.1 for all uses. If you're a developer, simply use `claude-opus-4-1-20250805` via the API. You can also explore our system card,

Introducing Claude Opus 4.6

We're upgrading our smartest model. Across agentic coding, computer use, tool use, search, and finance, Opus 4.6 is an industry-leading model, often by wide margin.



Claude 3.7 Sonnet and Claude Code

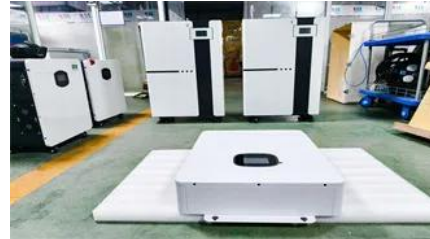
Today, we're announcing Claude 3.7 Sonnet, our most intelligent model to date and the first



AINEGY 500KW Hybrid Inverter+LiFePO4

It supports peak shaving and valley filling applications, as well as parallel expansion. It features IP54 protection design and integrated

hybrid reasoning model generally available on the market.



Introducing Claude Opus 4.5 \ Anthropic

Our newest model, Claude Opus 4.5, is available today. It's intelligent, efficient, and the best model in the world for coding, agents, and computer use. It's also meaningfully better at

Contact Us

For catalog requests, pricing, or partnerships, please visit:
<https://www.peyronies.us>