

# Microgrid Photovoltaic Power Generation Design Scheme



## Microgrid Photovoltaic Power Generation Design Scheme

---



### How to play with friends? : [r/geoguessr](#)

This is the subreddit for all things Geoguessr. Refer to the Post Flair as a guide for the types of things to share here. If you're looking for Geoguessr challenges, head to [r/geochallenges!](#)



### Taj Mahal, Agra, India

Taj Mahal: The Taj Mahal, often referred as the "Crown of Palaces" is a marvel creation of Mughal emperor Shah Jahan. It was built by him in memory of his third wife, Mumtaz Mahal.



### The Taj Mahal: Everything You Need to Know

Situated on the banks of the Yamuna River in Agra, India, the Taj Mahal is a white marble mausoleum complex that dates back to the 17th century. It was commissioned by Mughal



### Documents and where to find them? : [r/geoguessr](#)

I've been watching GeoGuessr rs way longer than I've been playing the game. Recently I've heard pros talk about different documents with metas for countries and regions and all



### Microsoft Support

Microsoft Support is here to help you with Microsoft products. Find how-to articles, videos, and training for Microsoft Copilot, Microsoft 365, Windows 11, Surface, and more.

**My long list of beginner tips : r/geoguessr**

This is the subreddit for all things Geoguessr. Refer to the Post Flair as a guide for the types of things to share here. If you're looking for Geoguessr challenges, head to r/geochallenges!



**Geoguessr**

Geoguessr has this neat feature where if you zoom in on a country it shows you the native language/script. Comparing this to the writing you found in game can be a huge help.

[Design and optimization of solar photovoltaic microgrids with adaptive](#)

This paper proposes a design methodology for standalone solar PV DC microgrids, focusing on Battery Energy Storage System (BESS) optimization and adaptive power management.



[Why is "today morning" wrong but "tomorrow morning" right?](#)

I think it is a good question. When there is yesterday morning and tomorrow morning, why have an exception for this morning (which means today's morning)? Yes, idiom, but I actually do like idiomatic

**Taj Mahal**

The Taj Mahal is an enormous mausoleum complex commissioned in 1632 by the Mughal emperor Shah Jahan to house the remains of his beloved wife.



**Last, This, and Next (days of the week)**

Last, This, and Next (days of the week) Ask Question Asked 10 years, 11 months ago



Modified 10 years, 11 months ago Viewed 12k times

[Microgrid Photovoltaic Power Generation Design Scheme](#)

This study presents a microgrid system primarily powered by wind and solar energy sources and identifies the issues related to the design, operation, and control of the system.

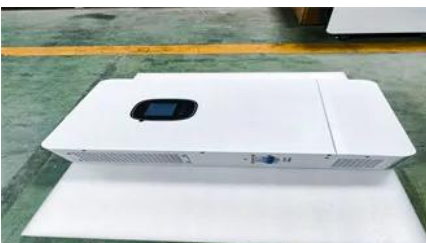


[Taj Mahal , Definition, Story, Site, Agra, History, & Facts](#)

The Taj Mahal is a mausoleum complex in Agra, Uttar Pradesh, in northern India, built by the Mughal emperor Shah Jahan in the 17th century. The complex houses the tombs of Shah Jahan and one of

**Microsoft campus**

The Microsoft campus is the corporate headquarters of Microsoft Corporation, located in Redmond, Washington, United States, a part of the Seattle metropolitan area. Microsoft initially moved onto the



**My Account**

Sign in to manage your Microsoft account and access free online services like Outlook, Word, Excel, and PowerPoint securely from any device.

**etymology**

today (adverb) 1. on this present day: I will do it today. 2. at the present time; in these days: Today you seldom see horses. So the second meaning of "today" is more-or-less identical to



"nowadays", but



[Microsoft - AI, Cloud, Productivity, Computing, Gaming & Apps](#)

Explore Microsoft products and services and support for your home or business. Shop Microsoft 365, Copilot, Teams, Xbox, Windows, Azure, Surface and more.



### The Taj Mahal - Smarthistory

Shah Jahan built the Taj Mahal in Agra, where he took the throne in 1628. First conquered by Muslim invaders in the eleventh century, the city had been transformed into a flourishing area of trade during



### My Account

Access and manage your Microsoft account, subscriptions, and settings all in one place.



[Microsoft products, apps, and devices built to support you](#)

Uncover the power of Microsoft's products, apps, and devices designed to simplify your life and fuel your passions. Explore our comprehensive range and unlock new capabilities.



[Taj Mahal-Official Website of Taj Mahal, Government of Uttar Pradesh](#)

Come, Walk along the pathway beside the reflecting pool with fountains upto the mausoleum crafted in soft & pure marble and jewelled with semi precious stones, where in the serenity of paradise rests

[Create and edit documents for free , Microsoft Word for the Web](#)

Write, edit, and collaborate on documents with Microsoft Word online. Free and seamless access from any device.



### **GeoGuessr**

This is the subreddit for all things Geoguessr. Refer to the Post Flair as a guide for the types of things to share here. If you're looking for Geoguessr challenges, head to r/geochallenges!

[Precise meaning of "Last N days, weeks, months or years"](#)

0 Today is Monday. Last week is strictly the period of seven days ending at midnight on Sunday and the last two weeks is strictly the period of fourteen days ending at midnight on Sunday.



[I created a free Multiplayer GeoGuessr Alternative that shows](#)

I created a free Multiplayer GeoGuessr Alternative that shows video instead of streetview. Compare your guesses in real time.

### **What is the meaning of "within next two days"?**

Hence, if within two working days were said on a Thursday, it would probably mean before the end of Monday. In conclusion, the expression within the next two days does not have an exact meaning, but



**A ton of no-moving challenge links : r/geochallenges**

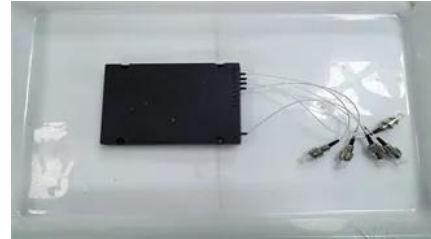
This is the official hub for all Geoguessr Challenges! Visit our companion subreddit,



[I made a game like GeoGuessr, except free and unlimited](#)

This is the subreddit for all things Geoguessr. Refer to the Post Flair as a guide for the types of things to share here. If you're looking for Geoguessr challenges, head to r/geochallenges!

r/geoguessr, to share Streetview finds, memes, maps you've created, and official news, or to engage



[Microsoft account , Sign In or Create Your Account Today - Microsoft](#)

Get access to free online versions of Outlook, Word, Excel, and PowerPoint.

### Taj Mahal

An immense mausoleum of white marble, built in Agra between 1631 and 1648 by order of the Mughal emperor Shah Jahan in memory of his favourite wife, the Taj Mahal is the jewel of Muslim art in India



[Taj Mahal Agra India - History, Architecture, Facts, Myths, Visit](#)

The Taj Mahal is one of the most beautiful monuments in India. Let's have a look at its history, architecture, location, opening hours, entry fee, myths, legends and other interesting facts.



### Sign in to your account

Access and manage your Microsoft account, subscriptions, and settings all in one place.





[Download Drivers & Updates for Microsoft, Windows and more.](#)

The official Microsoft Download Center. Featuring the latest software updates and drivers for Windows, Office, Xbox and more. Operating systems include Windows, Mac, Linux, iOS, and Android.

### Taj Mahal

It is regarded as one of the best examples of Mughal architecture and a symbol of Indian history. The Taj Mahal is a major tourist attraction and attracts more than five million visitors a year. In 2007, it was



[Is it no longer possible to play for free? : r/geoguessr](#)

Hello, I have a subscription, but I've been playing with friends on a free account. Because not anyone can afford or want to pay subscription, so we've been having fun just playing the free

### How to address today and the following 9 days

Would you think "the next 10 days" includes today? If not, would there be a clearer way to put it, to refer to today and the following 9 days?



[How should "a month and ten days from now" be interpreted?](#)

The most natural thing to do would be to take them in the order specified. So first go a month from today, and then go 10 days. This goes to March 30th. As a general presumption, take the

### "Within" and "in" when referring to time

Within is regarded as specifying an upper limit:

within two days means maybe today, maybe tomorrow, but no later than two days from now. In is sometimes regarded as more precise: in two days could



[Does the term "within 7 days" mean include the 7th day?](#)

There's also the perennial question of whether the last day ends on the multiple of 24 hours from the time when the deadline was given, if it means midnight of that day, or closing time of that day, or



**Office 365 login**

Collaborate for free with online versions of Microsoft Word, PowerPoint, Excel, and OneNote. Save documents, spreadsheets, and presentations online, in OneDrive.



[Photovoltaic power generation microgrid design scheme](#)

This paper is focused on the design and development of a photovoltaic (PV) power conditioning system for a hierarchically controlled microgrid application and key simulation and

[What are your top tips for a new player? : r/geoguessr](#)

This is the subreddit for all things Geoguessr. Refer to the Post Flair as a guide for the types of things to share here. If you're looking for Geoguessr challenges, head to r/geochallenges!



## Contact Us

For catalog requests, pricing, or partnerships, please visit:  
<https://www.peyronies.us>