

Several ways to protect base station power supply from lightning



 TAX FREE

1-3MWh
BESS



Several ways to protect base station power supply from lightning



[SEVERAL definition and meaning , Collins English Dictionary](#)

Several is used to refer to an imprecise number of people or things that is not large but is greater than two. I had lived two doors away from this family for several years. Several blue plastic boxes under

How Are Base Stations Protected Against Lightning?

In base station lightning protection design, the grounding grid and ground busbars are key components. With proper design, they can effectively reduce the impact of lightning on the station.

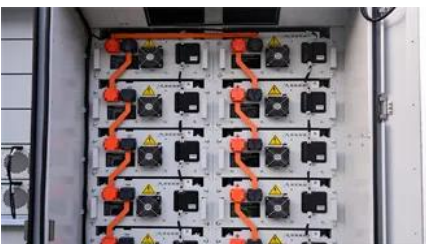


SEVERAL , English meaning

SEVERAL definition: 1. some; an amount that is not exact but is fewer than many: 2. separate or different: 3. some. Learn more.

SEVERAL Definition & Meaning

The meaning of SEVERAL is separate or distinct from one another. How to use several in a sentence.



Couple or Few or Some or Several or Many

Use "several" when you want to indicate a moderate quantity - typically three to seven items - without being exact. "Some" is more flexible and vague, applying to both countable and

[Commonly Confused Words: A Couple, A Few, Some, Several, or Many?](#)

"Some" might be the same as "a few" or it might be more, inching up to "several." You might have "several dollars" in your pocket, or you might have "some cash" in your wallet, and those



[How to Use Quantifiers "some," "any," "few," "many," "much," and](#)

The word "several" means more than two but not a large number. It falls somewhere between "a few" and "many", and it's commonly used when you want to refer to a modest quantity without being specific.

[How many is Several? Here's the FULL explanation \(+10 EXAMPLES\)](#)

The definition of several in numbers is considered to be "a handful." You can think of "several" as more than "a few" but less than "many."



Communication Network GSM-Base Stations and

The protection of GSM and base station towers from lightning and overvoltage is provided by integrating external lightning systems, internal lightning systems,

[ITU-T Rec. K.56 \(05/2021\) Protection of radio base stations](#)

The protection techniques for the external area cover the lightning protection system (LPS), bonding procedures, earthing and the installation of surge protective devices (SPDs) at the power meter station.





[Base Station Lightning Protection Guide , PDF , Cable](#)

The document summarizes ITU-T Recommendation K.56 for protecting radio base stations from lightning strikes. It discusses assessing the lightning risk level and

[5G base station lightning protection scheme: key role and selection](#)

Choosing varistors that meet strict standards (such as UL 1449, IEC 61643) and have matching parameters, and implementing scientific multi-level protection design, can build a strong



[How to Safeguard Mobile Base Stations from Lightning?](#)

In this article, we break down the key requirements of the industry standard YD5068-98 - Code for Design of Lightning Protection and Grounding of Mobile Communication Base Stations, and explain

Several

1. being more than two but fewer than many in number or kind: several ways to do the same thing. 2. respective; individual: They went their several ways. 3. separate; different: several occasions. 4.



[Few vs. Couple vs. Several: Understanding the Differences](#)

"Several" means more than two but not many. It usually refers to three to seven of something. It indicates a larger number than "few", but still a limited quantity. Examples: I read

[Wireless Network Base Station AC and DC Power Line Circuit](#)

This application note provides an overview of the

need to protect wirelessnetwork base stations from lightening strikes and power faults.Base Station power line protection devices help prevent



["Few" vs. "Couple" vs. "Several": How Much Do They Really Mean?](#)

Generally speaking, several is used to refer to quantities above two or so but not so much that it's a lot or many. Perhaps the most common interpretation or intended sense of several is

[Lightning and Surge Protection for Communication Station](#)

Install lightning rods, grounding, surge protectors, shielding, and follow standards for effective communication station protection.



[Designing to Protect 5G Macro Base Stations for High](#)

In this article, learn about protecting three major base station systems, the baseband unit, the power supply, and the backup battery system.

LIGHTNING PROTECTION SOLUTION FOR BASE

To properly protect the power line of a base station, the line entering the building should use a cable with metal cladding, buried underground. Both



Contact Us

For catalog requests, pricing, or partnerships, please visit:
<https://www.peyronies.us>