

Western european solar outdoor power cabinet bess large capacity



Overview

The iCON 100kW 215kWh Battery Storage System is a fully integrated, on or off grid battery solution that has liquid cooled battery storage (215kWh), inverter (100kW), temperature control and fire safety system all housed within a single outdoor rated IP55 cabinet. The outdoor cabinet design provides key benefits including all-weather resilience with a high IP rating for protection against dust and water, a compact and integrated plug-and-play structure that saves space and enables rapid deployment, and a self-contained design that minimizes on-site. The energy storage cabinet has a long lifespan of 10 years, protective class reaches IP54, with a forced air cooling method, over 6000 cycle times at 80% DOD, 25°C. We offer a warranty of standard 60-month warranty from the delivery date. Adopting modularized pcs, it is easy to maintain and expand. Individual pricing for large scale projects and wholesale demands is available. Easy-to-install NEMA 3R / IP54 rated Parallel installation side-by-side or back-to-back. Compatible with Modular design with different optional parts.

Western european solar outdoor power cabinet bess large capacity



[All in One Outdoor Storage Cabinet 500kw 1mwh Bess Solar Battery](#)

SunArk Power has 20+ experience producing energy storage products and 90, 000+ systems actively running in 80+ countries, enabling millions of people to enjoy reliable, accessible and clean energy.

90kW/266kWh Outdoor cabinet BESS

90kW/266kWh Outdoor cabinet BESS Features All-in-one design and highly integrated Modular design with different optional parts. Easy-to-install NEMA 3R



[100kW/215kWh Air Cooling BESS System , Scalable Power Unit](#)

Its compact design supports solar/diesel hybrids, EV charging, and microgrids, while smart monitoring ensures 24/7 performance. Ideal

One day Western Tokyo itinerary : r/JapanTravelTips

I have this itinerary I like that covers a lot of ground in a single day on the western side of Tokyo: First, get yourself to Shinjuku Station, then exit on the EAST side of the station. From there,





Western Health Science? : r/OntarioUniversities

Western Health Science? I'm currently in grade 12 and am interested in health sci, and was wondering how "early admissions" are considered at western. Do they just look at your grade 11

Western Union Money Orders : r/USAA

As most of you know, we cannot mobile deposit Western Union money orders per instruction on the money order itself. I tried to use one of the



Bess 500kwh Outdoor Cabinet

Discover AZE's advanced All-in-One Energy Storage Cabinet and BESS Cabinets - modular, scalable, and safe energy storage solutions. Featuring lithium-ion batteries, integrated thermal management,

100kW 215kWh All-in-One Battery Storage Cabinet

This industrial and commercial battery storage system is the ideal compact solution for your battery projects to work alongside solar PV, EV



CATL 90KW/266KWH All-in-one Outdoor Cabinet

Individual pricing for large scale projects and wholesale demands is available. up

Queens or western : r/OntarioUniversities

Did my BHSc at Western and MA at Queen's. Some of my personal takeaways, but no rankings: Queen's student culture (for undergrads) seems more fun. Probably the better school if



[Western Interview Invites/Regrets 2024 : r/premedcanada](#)

It took me 3 cycles to get into med and western was my only invite! Hopefully UofT comes through for you this year but if not I'm happy to help with your western application next cycle!

[BESS 250kW 500kW 500kWh 1MWh Outdoor Cabinet ESS Lithium](#)

The BESS solution delivers utility-grade energy storage for commercial and industrial applications. The system features modular architecture supporting 250kW to 500kW continuous power output with



Western Medical Science Admissions : r/uwo

Hi Western Med Sci Students, I am currently in the IB program and have a 95.67 avg with 3 final grade 12 marks (bio 96, advanced functions 97, physics 94) What are my chances into getting

Outdoor BESS Battery Energy Storage Cabinet System

The NEMA type outdoor lithium battery enclosure can effectively control the inner ideal



temperature of the cabinet and make the battery run in an ideal



[Question about Western Alliance Bank : r/personalfinance](#)

Hello everyone I recently deposited \$60,000 using the website called savebetter and my money is currently sitting in a high yield interest savings account with Western Alliance Bank

[125kW/253kWh,125kW/261kWh,215kW/418kWh Outdoor C&I BESS](#)

The peak shaving solution uses 5 sets of 100kW/215kWh outdoor BESS cabinet, leverages battery storage to stores grid energy during low-demand periods and discharges during peak hours, stabilize



400V 50Ah High Voltage LiFePo4 Lithium Battery UPS

Integrated with a 100KW Power Conversion System (PCS) and a robust Battery Management System (BMS), this outdoor energy storage cabinet offers reliable

[Differences between western and southern culture? : r](#)

The Western Culture in the United States has many different subcultures but it's still a part of a distinctive regional culture. The South is the same way but so are the West Coast and the East Coast.



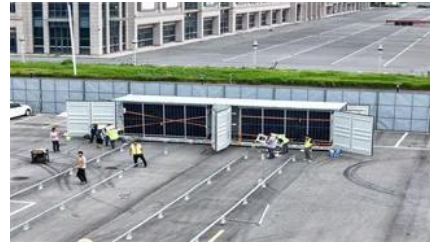


[Western University EdD Experience : r/CanadianTeachers](#)

Hello Everyone, I am looking for anyone who has completed the Western Education Doctorate or is currently in the EdD program. Western currently has the Ed. Leadership and Equity, Diversity, and

Western governors university (Wgu) : r/nursing

I did the RN to MSN program and I really liked it. I recommend WGU to everyone. It's a go at your own pace program. You have to do a minimum, but you can take your time or go through



Contact Us

For catalog requests, pricing, or partnerships, please visit:
<https://www.peyronies.us>