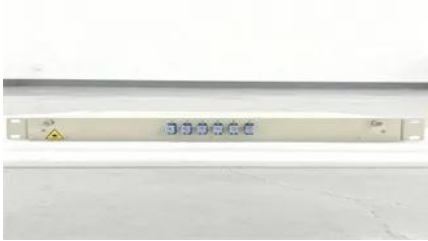


What are silicon-based photovoltaic panels



What are silicon-based photovoltaic panels



Silicon

Silicon is the eighth most common element in the universe by mass, but very rarely occurs in its pure form in the Earth's crust. It is widely distributed throughout space in cosmic dusts, planetoids, and

[Advancements in Photovoltaic Cell Materials: Silicon, Organic, and](#)

This review paper provides an in-depth analysis of the latest developments in silicon-based, organic, and perovskite solar cells, which are at the forefront of photovoltaic research.



[Periodic Table of Elements: Los Alamos National Laboratory](#)

Silicon makes up 25.7% of the earth's crust, by weight, and is the second most abundant element, being exceeded only by oxygen. Silicon is not found free in nature, but occurs chiefly as the oxide and as

Silicon

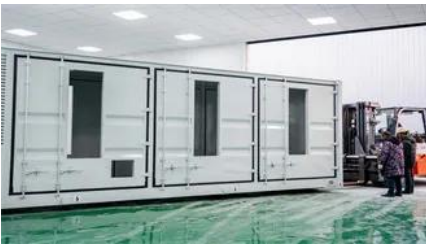
Element Silicon (Si), Group 14, Atomic Number 14, p-block, Mass 28.085. Sources, facts, uses, scarcity (SRI), podcasts, alchemical symbols, videos and images.





[Silicon: The Versatile Element Behind Tech, Industry, and Daily Life](#)

Explore the comprehensive guide on Silicon, the element with atomic number 14. Learn about its history, physical and chemical properties, its significant roles in technology, industry, healthcare, and



Silicon

Silicon is the second most abundant element on earth after oxygen, representing nearly 26% of the earth's crust by mass. It is not present as a single element but is always associated with another



Browse Wedding Venues Near You

Picking a Wedding Venue Choosing a wedding venue for your reception and ceremony tends to be the first step in the wedding planning process. Wedding venues are typically booked 1-2 years in



Silicon

Silicon (chemical element symbol Si, atomic number 14) is a member of a group of chemical elements classified as metalloids. It is less reactive than its chemical analog carbon.



Silicon , Si (Element)

Periodic Table Silicon Silicon is a chemical element with symbol Si and atomic number 14. Classified as a metalloid, Silicon is a solid at 25°C (room temperature).

[Silicon Facts, Symbol, Discovery, Properties, Common Uses](#)

Silicon (pronunciation SIL-ee-ken), represented by the chemical symbol or formula Si , is a semiconductor belonging to the carbon family . It can be of two types, amorphous powder



The 10 Best Wedding Venues in Jacksonville

Find the best Jacksonville Wedding Venues. WeddingWire offers reviews, prices and availability for 80 Wedding Venues in Jacksonville.

[Silicon , Element, Atom, Properties, Uses, & Facts , Britannica](#)

Silicon, a nonmetallic chemical element in the carbon family that makes up 27.7 percent of Earth's crust; it is the second most abundant element in the crust, being surpassed only by oxygen.



What Is a Silicon Wafer for Solar Cells?

P-type (positive) and N-type (negative) silicon wafers are the essential semiconductor components of the photovoltaic cells that convert

Weddings, Wedding Venues

The easiest way to find local wedding venues, cakes, dresses, invitations & more. WeddingWire is stress free, hassle free, and just plain free.





Crystalline Silicon Photovoltaics Research

What is a Crystalline Silicon Solar Module? A solar module-what you have probably heard of as a solar panel-is made up of several small solar cells wired together inside a protective casing. This

[Why Silicon Remains the Top Choice for Solar Panels](#)

Silicon-based panels are now more affordable and accessible than ever, facilitating the rapid adoption of solar energy across both developed and



[Wedding Planning, Easy Online Wedding Planner , WeddingWire](#)

Wedding Planning - Our wedding planning tools help make planning your own wedding stress free. Discover the easiest way to plan a wedding.

Silicon Solar Cell

Silicon solar cells made from single crystal silicon (usually called mono-crystalline cells or simply mono cells) are the most efficient available with reliable commercial cell efficiencies of up to 20% and



[Silicon , History, Uses, Facts, Physical & Chemical Characteristics](#)

Silicon is a brittle and hard crystalline solid. It



has blue-grey metallic lustre. Silicon, in comparison with neighbouring elements in the periodic table, is unreactive. The symbol for silicon is Si with atomic

Contact Us

For catalog requests, pricing, or partnerships, please visit:
<https://www.peyronies.us>