

# What is the rated voltage of the photovoltaic combiner box



## What is the rated voltage of the photovoltaic combiner box

---



### [RATED definition and meaning , Collins English Dictionary](#)

RATED definition: a quantity or amount considered in relation to or measured against another quantity or , Meaning, pronunciation, translations and examples



### **RATED , English meaning**

RATED definition: 1. past simple and past participle of rate 2. to judge the value or character of someone or . Learn more.



### **IMDb Top 250 movies**

Learn more about how list ranking is determined. As rated by regular IMDb voters.



### **Rated Definition & Meaning , YourDictionary**

Simple past tense and past participle of rate. Alex admired the breasts - which probably rated him right up there with the majority of men. The old-style wall sockets, often rated at 600 watts, take two round



### **RATED Definition & Meaning**

The meaning of RATE is a quantity, amount, or degree of something measured per unit of something else. How to use rate in a sentence.

Synonym Discussion of Rate.

## [Combiner Box - Solar Panel String Wiring Explained , Jaspercor](#)

The combiner box must be rated for the maximum system voltage and total combined current of all strings. A typical residential system with three to four strings at 600 VDC requires a four- to six-string



## [PV Combiner Box Guide: Residential vs. Utility-Scale Design & Selection](#)

Residential PV combiner boxes typically handle 600V DC systems with 2-6 string inputs and operate in single-family installations, while utility-scale combiner boxes manage 1500V DC

## [rated, adj.1 meanings, etymology and more , Oxford English Dictionary](#)

Factsheet What does the adjective rated mean? There are two meanings listed in OED's entry for the adjective rated. See 'Meaning & use' for definitions, usage, and quotation evidence.



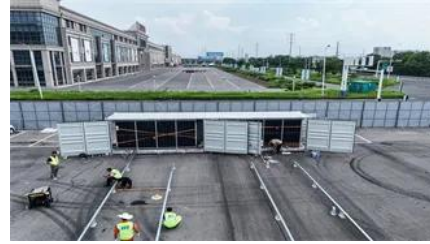
## **Combiner Box**

Standard String Combiner Box Max System Voltage: 1500 V Rated Output Current: 400A Overcurrent Protection Range: 15A-30A per input

## **Combiner Box Selection Guide: How to Choose the**

A solar combiner box merges multiple DC strings

from solar panels into a single output for the inverter. To choose the right one, you must match the system



## What You Should Know about PV Combiner Box

Rated Current/Voltage: The combiner box's rated current and voltage must exceed the system's maximum operating current and voltage. Typical ratings range from 10A-30A per string and

## Contact Us

---

For catalog requests, pricing, or partnerships, please visit:  
<https://www.peyronies.us>