

# What is the temperature at which lithium batteries can store energy



## Overview

---

Best lithium-ion battery storage temperature:  $-20^{\circ}\text{C}$  to  $25^{\circ}\text{C}$  ( $-4^{\circ}\text{F}$  to  $77^{\circ}\text{F}$ ), stored at 30%-50% state of charge (SOC). Lithium battery temperature range overview Lithium battery temperature range varies by usage: Operating or storing lithium-ion batteries. Most lithium-ion batteries operate safely between  $-20^{\circ}\text{C}$  to  $60^{\circ}\text{C}$ , but pushing beyond that means reduced lifespan, power drops, or worse, thermal runaway. But  $0^{\circ}\text{C}$  to  $45^{\circ}\text{C}$  for charging is much stricter, to prevent permanent damage. Here's why: Avoid Heat: Temperatures above  $30^{\circ}\text{C}$  ( $86^{\circ}\text{F}$ ) speed up chemical reactions inside the battery, causing irreversible capacity loss.

## What is the temperature at which lithium batteries can store energy

---



### New Fan Control DSDT

The first byte of each pair in the buffer is the high temperature threshold for the given fan speed that follows. So, for temps up to 40C, the fan is set to automatic (0xFF or 255) and since we

### Software to check CPU temperature on OS X?

I just upgraded from the stock Intel cooler to a Corsair H55 and I want to check my CPE temperature on load and idle, so far all the software I have tried using haven't worked on my



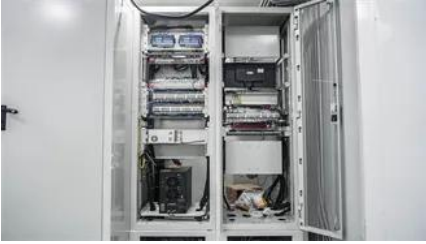
### [The Definitive Guide to Lithium Battery Temperature](#)

Maintaining the proper temperature for lithium batteries is vital for performance and longevity. Operating within the recommended range of 15°C to 25°C (59°F to

### [Lithium-ion batteries for low-temperature applications: Limiting](#)

LIBs can store energy and operate well in the standard temperature range of 20-60 °C, but performance significantly degrades when the temperature drops below zero [2, 3].





## What's the Optimal Lithium Battery Storage

Storage Temperature: For long-term storage, the ideal lithium ion battery storage temperature is 10°C to 25°C (50°F to 77°F). Temperatures above 30°C (86°F)



## DELL 5290 2in1 i7 8650u, Temperature too high

Hello, I have a Dell Latitude 5290 2 in 1 laptop. I have get efi from here: Dell 5290 2 in 1 , tonymacx86 And now, almost everything works great, including the mult



## gpu temperature info rx 580 8gb

gpu temperature info rx 580 8gb hi, what is the normal temperature of rx 580 8gb in mojave? thx.



## NootedRed - AMD Radeon Graphics - macOS Sonoma

I bought a second-hand Ryzen 7 5700g for GBP115 from eBay. Will be interesting to see how this 8-core/16-thread CPU/APU behaves in macOS. Already running Windows 11 on an Asus TUF



## High Temperature on ASUS Laptop!

Hi, I have and Asus Vivobook (X556UV) with high sierra. But my laptop stay always at 80? (With no program active) and arrive at 95? the cpu-fan is off

## Lithium Battery Temperature Range: Operating and

Best lithium-ion battery storage temperature: -20°C to 25°C (-4°F to 77°F), stored at 30%-50% state of charge (SOC). Storing lithium batteries within



## A Guide to Lithium Battery Temperature Ranges for

The ideal operating temperature range for lithium batteries is 15°C to 35°C (59°F to 95°F). For storage, it is best to keep them in a temperature range

### [The best storage temperature and humidity for lithium](#)

Storing lithium batteries at 15-25°C and 30-50% RH isn't just about following specs-it's about protecting your investment. Whether you're a



## New NVMe Recommendation

Temperature control was solid too, with my motherboard's heatsink keeping it down to a peak of 61 degrees Celsius during those three tests. When idle, its temperature was between 51 and

## What Temperature Should Lithium-Ion Batteries Be

The ideal temperature range for storing lithium-ion batteries is between 20°C and 25°C (68°F and 77°F). Exposing them to temperatures above 60°C (140°F) can





## Lowest Operating Temperature for Lithium Batteries

Lithium batteries are highly efficient, but temperature plays a major role in their performance and lifespan. While most lithium batteries can operate

## rx 580 FAN not always spinning

why is it that my rx 580 fan not always on. it turns idle. and also how would I know if my rx 580 is fully working :) I attached herewith is my screenshot. and also.. how to be able to activate



## What is Lithium Battery Operating Temperature?

This article primarily introduces the ideal temperature range for charging and discharging lithium battery. It explores how high and low temperatures affect battery performance, capacity, and

## High GPU idle temperatures on Catalina (RX 5700-XT)

Hi, I am new in Hackintosh. I just completed the windows 10 installation on my dual boot system, and I noticed something, the GPU idle temperature on Catalina was much higher than on my



## Li-Ion Battery Safe Temperature: Everything You



Most lithium-ion batteries operate safely between -20°C to 60°C, but pushing beyond that means reduced lifespan, power drops, or worse, thermal

### **High temperatures (up to 80c when idle)**

Just after boot CPU's temperature hangs around 50c, but with time, even when idle, it can reach up to 80c.



## **Contact Us**

---

For catalog requests, pricing, or partnerships, please visit:  
<https://www.peyronies.us>