

What size inverter is best for a 300a solar container lithium battery



Overview

- Rule of Thumb: The inverter's rated power (kW) should align with the battery's capacity (kWh). - Oversizing the battery can lead to underutilization, while undersizing may limit performance.

What size inverter is best for a 300a solar container lithium battery



[How to Choose the Right Inverter for Lithium Battery Systems Guide](#)

Learn how to select the right inverter for lithium battery systems, covering LiFePO4 compatibility, sizing, safety, solar integration, and long-term performance use.

[Best Inverters for Lithium Batteries to Power Your Off-Grid and](#)

Below is a comparison table summarizing some top-rated inverters and inverter-inclusive setups that work well with lithium batteries for various applications including RVs, solar systems, and



What Size Inverter for 300ah Battery?

For a 300Ah battery, the inverter size must be sufficient to handle the battery's capacity without overloading it. The general rule of thumb is to choose an inverter with a capacity that is at

[The Ultimate Guide to Matching Your Lithium Battery](#)

Conclusion: With that battery, you can run a 2500W inverter with a healthy safety margin. Its high cycle life and incredibly flat voltage curve mean it's a solid



[How do I determine the size of an object in Python?](#)

Just use the `sys.getsizeof` function defined in the `sys` module. `sys.getsizeof(object[, default])`: Return the size of an object in bytes. The object can be any type of object. All built-in objects will return correct

Determining the Solar and Inverter Size Needed to

This guide will walk you through everything you need to know to calculate the optimal Size of your solar and inverter setup to charge batteries



[Battery and Inverter Sizing Guide 2025: How to Match Solar Storage](#)

Learn how to size and pair a battery with your solar inverter in 2025. Discover key ratios, examples, and Growatt solutions for optimal solar + storage system design.

How to Select the Right Inverter for Your Lithium

A definitive inverter selection guide for lithium battery systems. Learn the crucial differences between AC and DC coupling, key compatibility factors,



How can I get the size of a MySQL database?

The file size does not reflect the real database size. In fact, after deleting entries from a table, the file is not shrunk; instead, it contains unallocated space that the engine will reuse by the next occasion.

[What does the C++ standard say about the size of int, long?](#)

If the size of the int is that important one can use int16_t, int32_t and int64_t (need the iostream include for that if I remember correctly). What's nice about this that int64_t should not have issues on a 32bit



How do I determine the size of my array in C?



[How to Choose the Right Size Solar Inverter: Step-by](#)

This guide walks you through calculating inverter size based on panel capacity, power usage, and safety margins. We use real examples from



What's the difference between size_t and int in C++?

In several C++ examples I see a use of the type size_t where I would have used a simple int. What's the difference, and why size_t should be better?



[What's sizeof\(size_t\) on 32-bit vs the various 64-bit data models?](#)

An individual process in an OS might only be allowed to reserve up to 4GB RAM or less, which means size_t would only need to be 32-bit while pointers are 64-bit. 32-bit wide size_t wouldn't

int a; size_t n = sizeof(a); On my computer, ints are 4 bytes long, so n is 68. To determine the number of elements in the array, we can divide the total size of the array by the size of



python 3.x

I found two ways to determine how many elements are in a variable I always get the same values for len () and size (). Is there a difference? Could size () have come with an imported



[Can an Inverter Be Too Big for Your Battery System?](#)

Lithium-ion batteries tolerate higher discharge rates (up to 1C) compared to lead-acid (0.5C). A 100Ah LiFePO4 battery can safely power a 1200W inverter, while lead-acid should cap at 600W.



necessarily

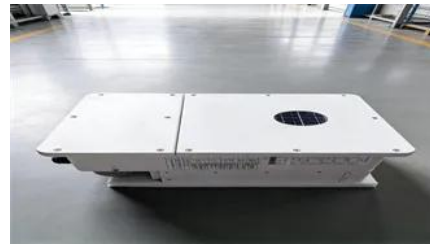


Difference between size and length methods?

What is the difference between `.size()` and `.length` ? Is `.size()` only for arraylists and `.length` only for arrays?

Inverter Size Calculator for Load , SolarMathLab

Use the SolarMathLab Inverter Size Calculator above to instantly estimate your ideal inverter capacity and surge rating based on your actual load and safety preferences.



Contact Us

For catalog requests, pricing, or partnerships, please visit:
<https://www.peyronies.us>