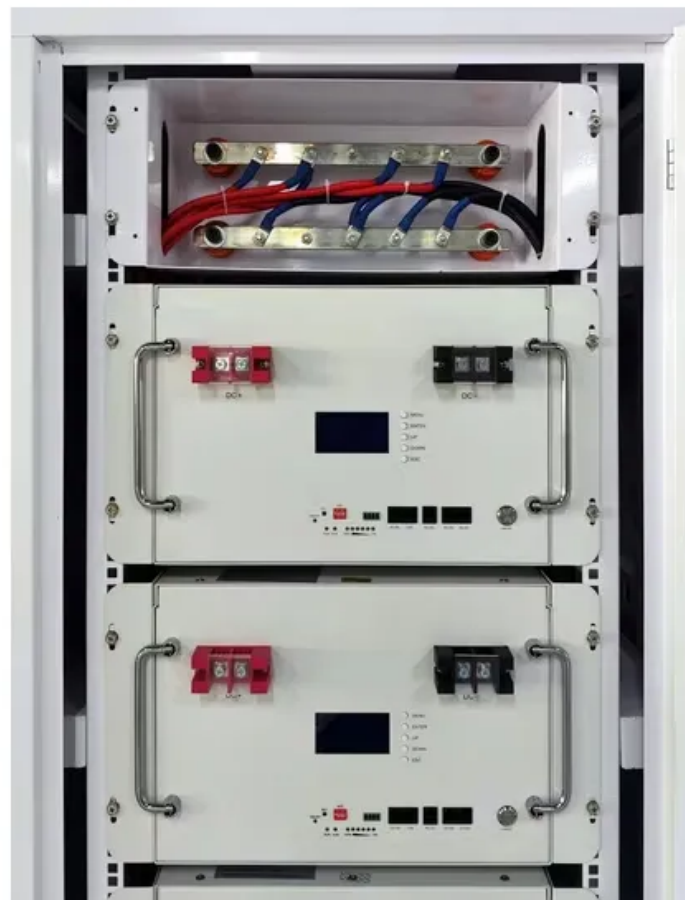


Why do wind turbine blades stop



Overview

Wind turbine blades might cease rotating due to several circumstances, such as rapid or sluggish wind speeds and adverse weather conditions. The turbines will cease spinning if they cannot get any energy from the wind or if their blades are damaged by too fast movement. Yet you might notice something peculiar: some turbines stand completely still while others nearby keep spinning. If there is no wind, the turbine cannot rotate. Wind speed is sometimes. However, when a wind farm found that one of its 475-foot blades snapped off recently, an investigation into the cause was undertaken by the farm's management as to why this took place.

Why do wind turbine blades stop



Why Definition & Meaning , YourDictionary

Why definition: For what purpose, reason, or cause; with what intention, justification, or motive.

WHY Definition & Meaning

The meaning of WHY is for what cause, reason, or purpose. How to use why in a sentence.



Why Do The Wind Turbines Stop

There are several potential reasons why wind turbines don't turn: a lack of wind, wind speeds that are too low to initiate rotation, excessively high wind speeds requiring a shutdown for

why adverb

Definition of why adverb in Oxford Advanced American Dictionary. Meaning, pronunciation, picture, example sentences, grammar, usage notes, synonyms and more.



Why Do Some Wind Turbines Not Turn?

There are many reasons why wind turbines stop operating. These range from natural conditions to technical failures, from regulatory restrictions to

Why Do Some Wind Turbines Stop Turning?

Why do some wind turbines stop turning? Wind turbines can stop turning their blades due to a variety of factors including



[why , Meaning, Grammar Guide & Usage Examples , Ludwig.guru](#)

Learn the meaning and correct usage of "why". Our guide provides clear grammar rules and real-world examples from authoritative sources to help you write with confidence.

[WHY definition and meaning , Collins English Dictionary](#)

You use why in questions when you ask about the reasons for something. Why hasn't he brought the bill? Why didn't he stop me? Why can't I remember the exact year we married?



Why Are Some Wind Turbines Not Turning?

Wind turbine blades might cease rotating due to several circumstances, such as rapid or sluggish wind speeds and adverse weather

Why Do Some Wind Turbines Not Turn

Wondering why some wind turbines aren't spinning? Discover the real reasons turbines stop or appear stationary, how they work, and what's normal. Get clear answers to common turbine





[Why Do Wind Turbines Stop? Top Reasons For Turbine Shutdowns](#)

Discover why wind turbines stop working! Learn the top reasons for turbine shutdowns and how it impacts renewable energy efficiency. Don't miss these crucial insights!

Wind Turbine Shutdown: Quick Troubleshooting Guide

The wind turbine shutdown process is a vital part of modern wind energy systems. By automatically stopping during extreme winds, turbines



Why Do Wind Turbines Stop?

A wind farm has mysteriously lost one of its huge wind turbine blades. The renewable energy subsector has gained a significant foothold in the global power market. However, when a

WHY , English meaning

When we ask for reasons in speaking, we can use the phrase why is that? In informal conversations we often say why's that?:



[Why do some wind turbine blades appear not to move?](#)

Is it an optical illusion or are they really stopped? Many people are surprised to see that, in the same wind farm, some wind turbines appear to not move. This phenomenon does not always mean that

Contact Us

For catalog requests, pricing, or partnerships, please visit:
<https://www.peyronies.us>